

VOR/DME or TACAN RWY 28

VORTAC SYA 109.0 Chan 27	APCH CRS 280°	Rwy Idg 10,004 TDZE 88 Arprt Elev 98
--	-------------------------	---

AL-1246 [USAF]

EARECKSON AS (PASY)

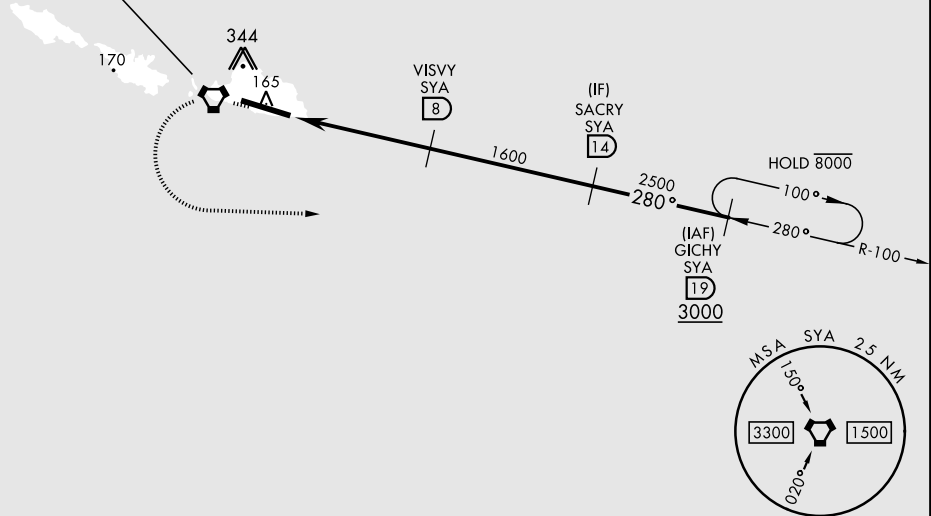
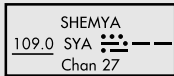
* When ALS inop, increase CAT AB vis to 1 mile,
CAT CDE vis to 1½ miles
** Circling Not Authorized in area N of Rwy 10-28.



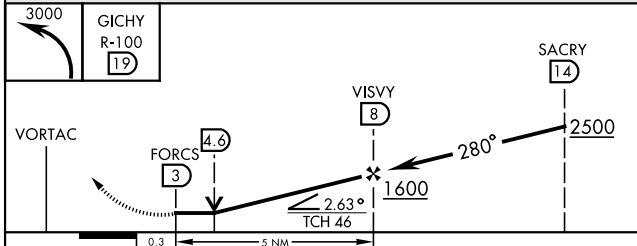
MISSED APPROACH: Climbing left turn to 3000, intercept SYA R-100 direct GICHY and hold.

ANCHORAGE CENTER 119.1 339.8	CTAF 127.2 352.05
--	-----------------------------

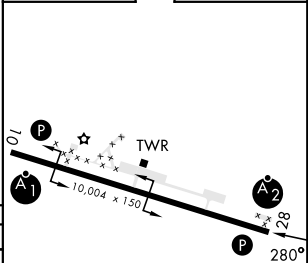
CAUTION: Numerous obstructions in area N of Rwy 10-28.
Missed approach requires use of RNAV or ATC RADAR monitoring.



EMERG SAFE ALT 100 NM 5400



ELEV 98	TDZE 88
---------	---------



CATEGORY	A	B	C	D	E
S-28 *	620-1 532 (600-1)		620-1¼ 532 (600-1¼)		
CIRCLING **	620-1 522 (600-1)		620-1½ 522 (600-1½)	660-2 (600-2)	680-2 (600-2)

HIRL Rwy 10-28
REIL Rwy 10 and 28

VOR/DME or TACAN RWY 28

AK, 11 JUL 2024 to 05 SEP 2024

AK, 11 JUL 2024 to 05 SEP 2024