

WAAS CH 72939 W04A	APP CRS 040°	Rwy Idg TDZE 447 Apt Elev 447	5000
--	------------------------	---	-------------

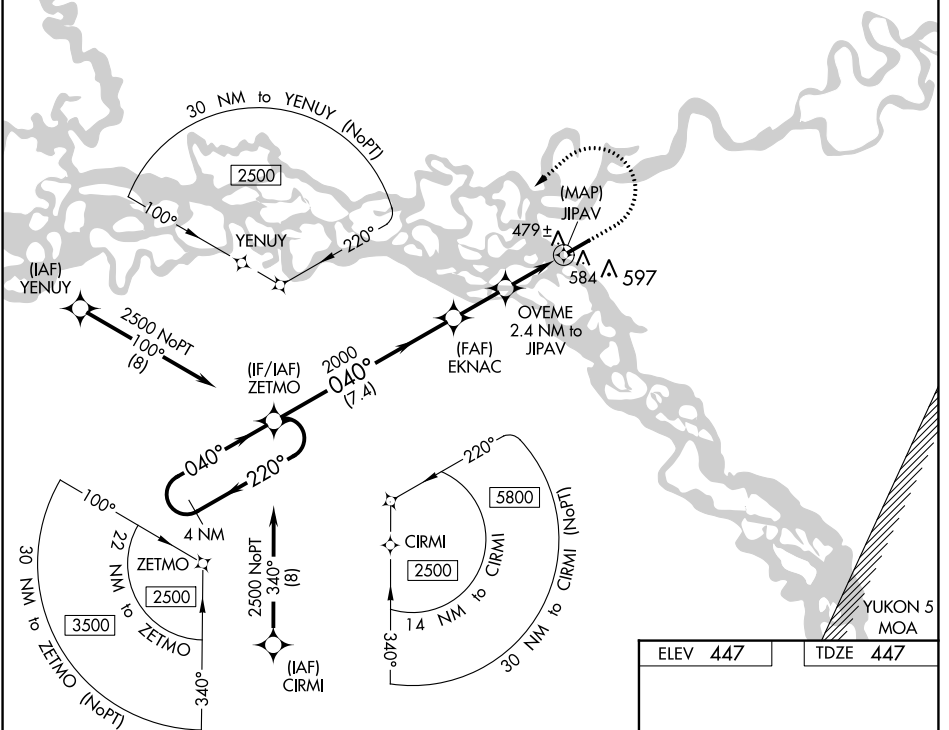
RNAV (GPS) RWY 4

FORT YUKON (FYU) (PFYU)

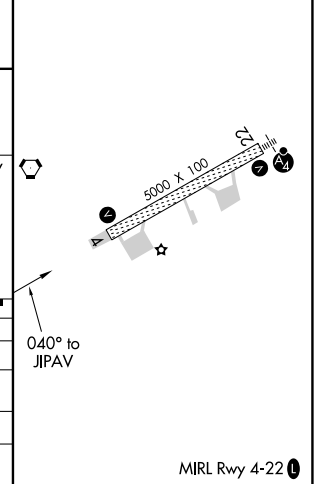
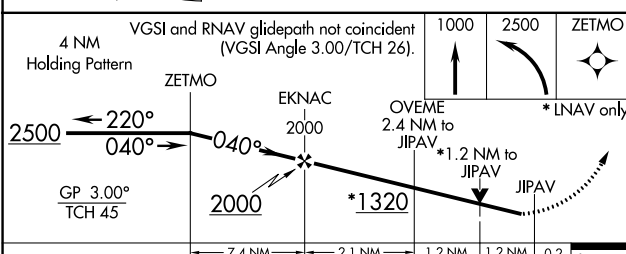
⚠ For uncompensated Baro-VNAV systems, LNAV/VNAV NA below -20° C (-4°F) or above 54°C (130°F). Circling NA southeast of Rwy 4-22. DME/DME RNP-0.3 NA. Rwy 4 helicopter visibility reduction below $\frac{3}{4}$ SM NA.

MISSED APPROACH: Climb to 1000 then climbing left turn to 2500 direct ZETMO and hold.

AWOS-3P 125.8	ANCHORAGE CENTER 135.0 225.4	FAIRBANKS RADIO 122.05	CTAF 122.5 ①
-------------------------	--	----------------------------------	-------------------------------



ELEV 447	TDZE 447
-----------------	-----------------



CATEGORY	A	B	C	D
LPV DA	697-1		250 (300-1)	
LNAV/VNAV DA	764-1		317 (400-1)	
LNAV MDA	860-1	413 (500-1)	860-1 $\frac{1}{8}$	413 (500-1 $\frac{1}{8}$)
ⓐ CIRCLING	860-1 413 (500-1)	900-1 453 (500-1)	900-1 $\frac{1}{2}$ 453 (500-1 $\frac{1}{2}$)	1000-2 553 (600-2)

MIRL Rwy 4-22 **①**

AK, 11 JUL 2024 to 05 SEP 2024

AK, 11 JUL 2024 to 05 SEP 2024