

RNAV (GPS) RWY 15

APCH CRS 172°	Rwy Idg 3945
	TDZE 456
	Arprt Elev 531

- (USAF)

CAPE NEWENHAM LRRS (PAEH)

RNP APCH	MISSED APPROACH: Climbing right turn to 3500 direct WAGEN and hold.
ANCHORAGE CENTER 124.2 251.1	RADIO 126.2 (CTAF)

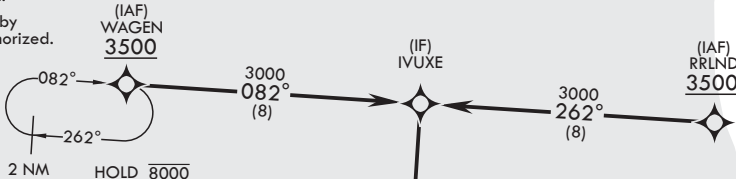
Straight-in Rwy 15 at night, operational VGSI required, remain on or above VGSI glidepath until threshold.

USAF Only: When VGSI inop, straight-in Rwy 15 authorized at night with command approval.

Visibility reduction by helicopters not authorized.

CAUTION:

- Rwy located on slope of 2306' mountain. High terrain both sides and S end of rwy.
- Successful go-around improbable if initiated past the MAP.

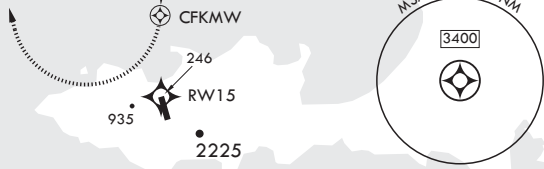


NOT FOR CIVIL USE

MILITARY CERTIFIED AIRCREWS OR AUTHORIZED CONTRACT AIRCRAFT ONLY

Unlit terrain 235' MSL, 200' from threshold, 200' left of course.

Uncontrolled Airspace below 700' AGL within 7 NM of Cape Newenham airport.



EMERG SAFE ALT 100 NM 7100

3500	WAGEN	VGSI and descent angles not coincident (VGSI Angle 3.00°/TCH 45).	IVUXE	ELEV 531	TDZE 456
CATEGORY	A	B	C	D	Land Rwy 15
LNAV MDA	1260-3	804	(800-3)	NA	Tkof Rwy 33
CIRCLING	NOT AUTHORIZED				REIL Rwy 15

RNAV (GPS) RWY 15

AK, 11 JUL 2024 to 05 SEP 2024

AK, 11 JUL 2024 to 05 SEP 2024