

LEXINGTON, OKLAHOMA

COPTER RNAV (GPS) RWY 17

APCH CRS	Rwy Idg	2005
175°	TDZE	1091
	Arprt Elev	1091

AL-2497 [USA]

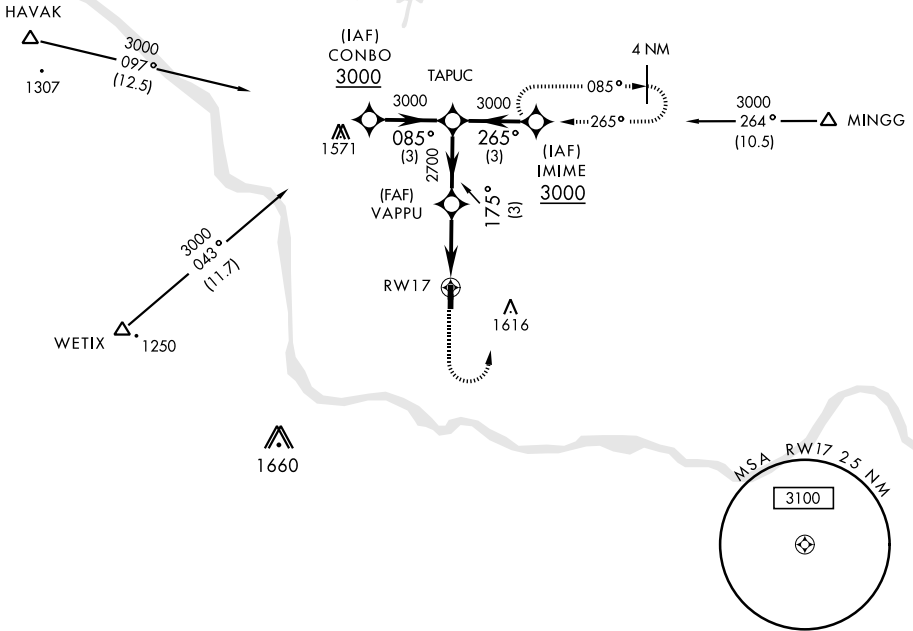
MULDROW AHP (KHMY)

<p>NA Obtain local altimeter setting on CTAF; when not received, use University of Oklahoma Westheimer altimeter setting minimums. DME/DME RNP-0.3 NA</p>	<p>MISSED APPROACH: Climbing left turn to 3000 direct IMIME and hold.</p>
--	---

OKE CITY APP CON
124.2 336.4

MULDROW OPS (Advsvy Svc only)
46.9 139.425 227.2 (CTAF)

Limit final and Missed Approach
airspeed to 90 KIAS.



SC-1, 11 JUL 2024 to 08 AUG 2024

SC-1, 11 JUL 2024 to 08 AUG 2024

		ELEV 1091	TDZE 1091
CATEGORY	COPTER		
LNAV MDA	1540-1 449 (500-1)		
UNIVERSITY OF OKLAHOMA WESTHEIMER ALTIMETER SETTING MINIMUMS			
LNAV MDA	1600-1 509 (600-1)		
		LIRL Rwy 17-35	35

LEXINGTON, OKLAHOMA
Orig 18200

35°02'N-97°14'W

MULDROW AHP (KHMY)

COPTER RNAV (GPS) RWY 17