

LEXINGTON, OKLAHOMA

COPTER RNAV (GPS) RWY 35

APCH CRS **355°**
 Rwy Idg **2005**
 TDZE **1091**
 Arprt Elev **1091**

AL-2497 [USA]

MULDROW AHP (KHMY)

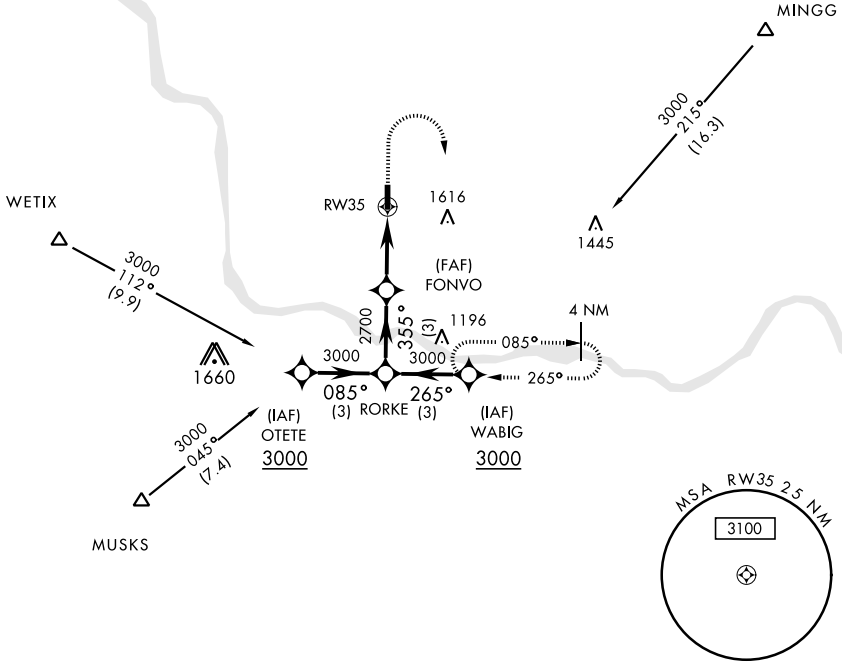
▲ NA Obtain local altimeter setting on CTAF; when not received, use University of Oklahoma Westheimer altimeter setting minimums. DME/DME RNP-0.3 NA

MISSED APPROACH: Climbing right turn to 3000 direct WABIG and hold.

OKE CITY APP CON
124.2 336.4

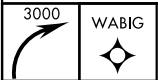
MULDROW OPS (Advsvy Svc only)
46.9 139.425 227.2 (CTAF)

Limit final and Missed Approach
 airspeed to 90 KIAS.



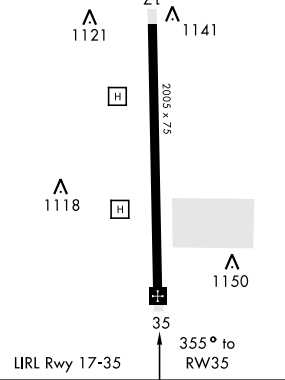
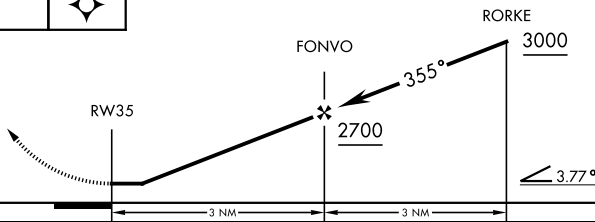
SC-1, 11 JUL 2024 to 08 AUG 2024

SC-1, 11 JUL 2024 to 08 AUG 2024



ELEV 1091

TDZE 1091



CATEGORY	COPTER	
LNAV MDA	1500-1	409 (500-1)
UNIVERSITY OF OKLAHOMA WESTHEIMER ALTIMETER SETTING MINIMUMS		
LNAV MDA	1560-1	469 (500-1)

LIRL Rwy 17-35

LEXINGTON, OKLAHOMA

35°02'N-97°14'W

MULDROW AHP (KHMY)

Orig 18200

COPTER RNAV (GPS) RWY 35