

NDB/DME	TKK	Rwy Idg	6013
375	APP CRS	TDZE	10
Chan 111 (116.4)	221°	Apt Elev	10

NDB RWY 22

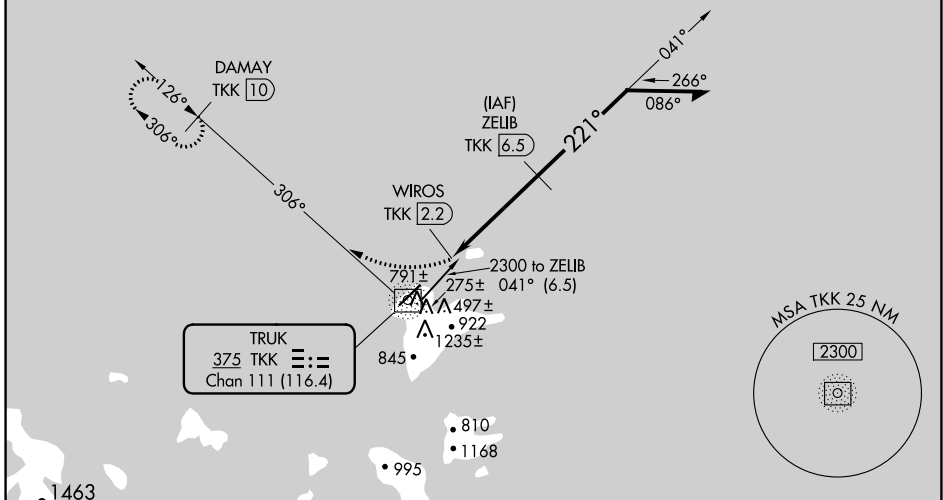
CHUUK INTL (TKK) (PTKK)

▽ Obtain local altimeter setting on CTAF; when not received, procedure NA.
▲ Circling NA southeast of Rwy 4-22. DME Required.
 No controlled airspace below 5500.

MISSED APPROACH: Climbing right turn to 2000 on BRG-306 from TKK NDB/DME to DAMAY/TKK 10 DME and hold.

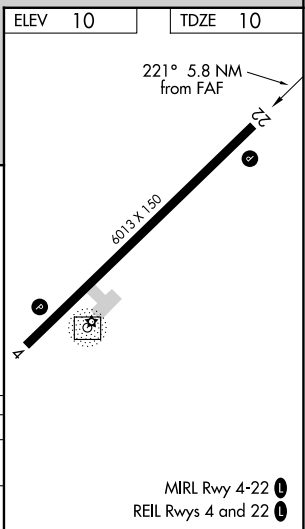
TRUK RADIO
123.6 (CTAF)

DME REQUIRED



PAC, 11 JUL 2024 to 05 SEP 2024

PAC, 11 JUL 2024 to 05 SEP 2024



2000 TKK 306°	DAMAY TKK 10	ZELIB TKK 6.5	Remain within 10 NM	
TKK NDB/DME	WIROS TKK 2.2	1900	2300	
1.5 NM		4.3 NM		
≤ 3.00° TCH 50				
CATEGORY	A	B	C	D
S-22	800-1¾	790 (800-1¾)	800-2½	790 (800-2½)
C CIRCLING	800-1¾	790 (800-1¾)	800-2½	790 (800-2½)