

APP CRS	Rwy ldg	<b>6013</b>
<b>041°</b>	TDZE	<b>10</b>
	Apt Elev	<b>10</b>

# RNAV (GPS) RWY 4

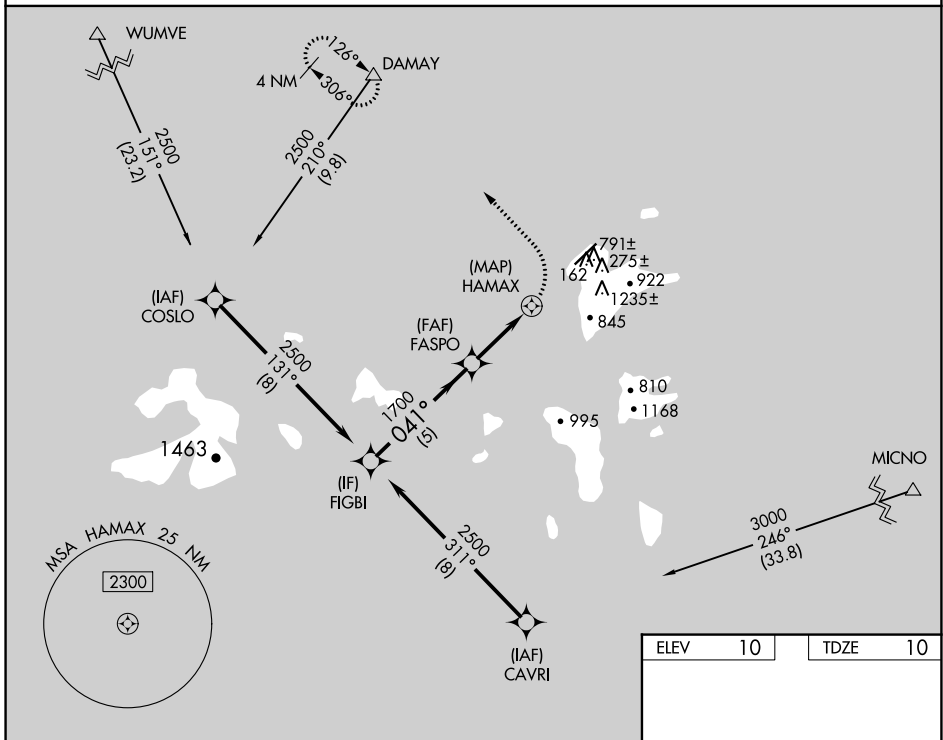
CHUUK INTL (TKK) (PTKK)

RNP APCH.

**▼** Obtain local altimeter setting on CTAF; when not received, procedure NA.  
**▲** Circling NA southeast of Rwy 4-22.  
 No controlled airspace below 5500.

MISSED APPROACH: Climbing left turn to 2500 direct DAMAY and hold.  
 \* Missed approach requires minimum climb of 375 feet per NM to 960.

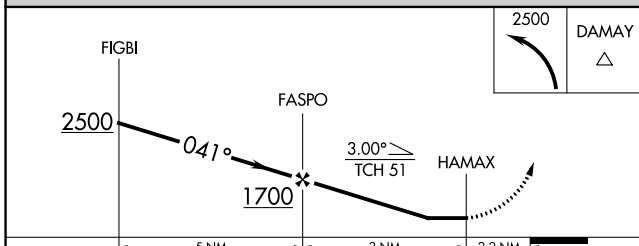
TRUK RADIO  
**123.6** (CTAF)



PAC, 11 JUL 2024 to 05 SEP 2024

PAC, 11 JUL 2024 to 05 SEP 2024

ELEV	10	TDZE	10
------	----	------	----



CATEGORY	A	B	C	D
LNAV MDA*		420-3	410 (500-3)	
LNAV MDA		620-3	610 (700-3)	
<b>C</b> CIRCLING		620-3	610 (700-3)	

