

(PALCO7.PALCO) 24081

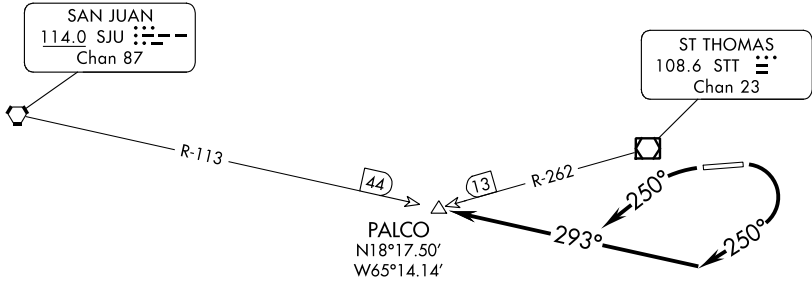
AL-5005 (FAA)

PALCO SEVEN DEPARTURE

CYRIL E KING (STT)(TIST)
CHARLOTTE AMALIE, VIRGIN ISLANDS

ATIS 124.0
GND CON
121.9
ST THOMAS TOWER ★
118.8 (CTAF) 257.6
118.1 (NORTH OF ISLAND)
SAN JUAN DEP CON
128.65 279.6

**TOP ALTITUDE:
3000**



TAKE-OFF MINIMUMS:

Rwy 10: 400-1 with minimum climb of 462' per NM to 1400 or 2100-2½ for climb in visual conditions.
Rwy 28: 800-3 or Standard with a minimum climb of 366' per NM to 1000.

NOTE: Chart not to scale.

NOTE: DME or RADAR Required.



DEPARTURE ROUTE DESCRIPTION

TAKEOFF RUNWAY 10: Turn right heading 250° (unless assigned otherwise) to intercept the SJU R-113 to PALCO INT, or climb in visual conditions to cross Cyril E King airport at or above 2100, then on SJU R-113 to PALCO INT. Thence

TAKEOFF RUNWAY 28: Turn left heading 250° (unless assigned otherwise) to intercept the SJU R-113 to PALCO INT. Thence

. . . . Maintain 3000 unless assigned lower altitude.
Expect clearance to flight level 280 or requested altitude if lower ten minutes after departure. Contact San Juan Departure.

PALCO SEVEN DEPARTURE
(PALCO7.PALCO) 15SEP16

CHARLOTTE AMALIE, VIRGIN ISLANDS
CYRIL E KING (STT)(TIST)

SE-3, 11 JUL 2024 to 08 AUG 2024

SE-3, 11 JUL 2024 to 08 AUG 2024