

| | | |
|---|------------------------|---|
| VOR/DME STT 108.6 Chan 23 | APP CRS 181° | Rwy Idg TDZE Apt Elev N/A N/A 24 |
|---|------------------------|---|

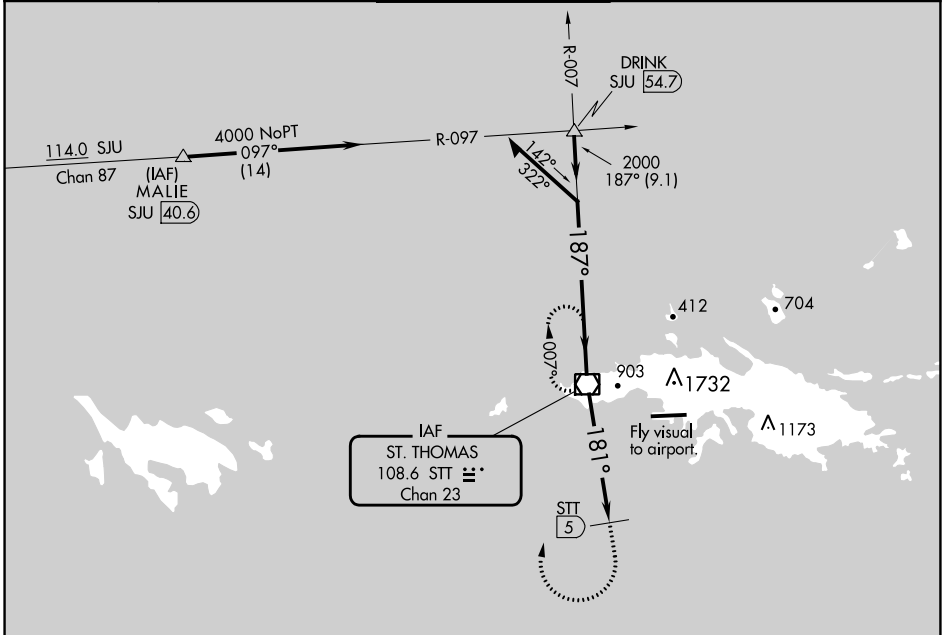
VOR-A

CYRIL E KING (STT)(TIST)

⚠ CAUTION: High terrain north of Rwy 10-28 extended. Circling NA north of Rwy 10-28. Procedure NA when control tower not in operation. Procedure NA at night.

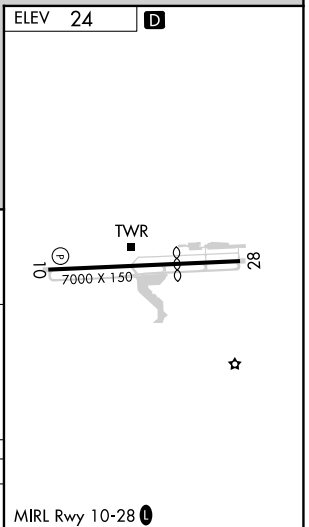
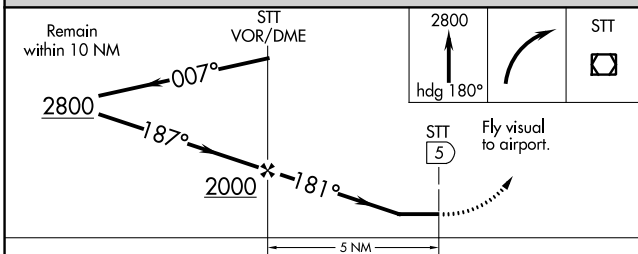
MISSED APPROACH: If unable to proceed visually to airport upon descent to 1160, climb to 2800 via heading 180°, then right turn direct STT VOR/DME and hold.

| | | | | |
|----------------------|--|--|-------------------------|-------------------------|
| ATIS 124.0 | SAN JUAN CENTER 128.65 279.6 | ST. THOMAS TOWER ★ 118.8 (CTAF) 0 257.6 118.1 (NORTH OF ISLAND) | GND CON 121.9 | UNICOM 122.95 |
|----------------------|--|--|-------------------------|-------------------------|



SE-3, 11 JUL 2024 to 08 AUG 2024

SE-3, 11 JUL 2024 to 08 AUG 2024



| | | | | |
|----------|--------|---------------|--------|---------------|
| CATEGORY | A | B | C | D |
| CIRCLING | 1160-3 | 1136 (1200-3) | 1480-3 | 1456 (1500-3) |