

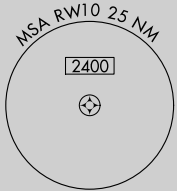
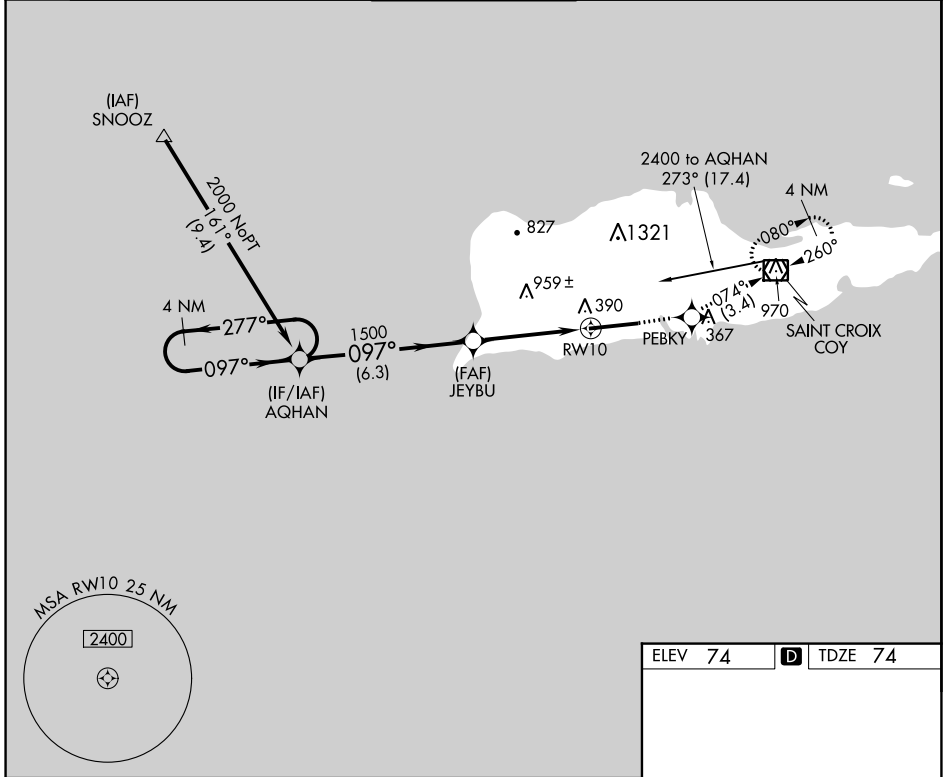
APP CRS <b>097°</b>	Rwy ldg <b>9003</b>
	TDZE <b>74</b>
	Apt Elev <b>74</b>

# RNAV (GPS) RWY 10

HENRY E ROHLSEN (STX)(TISX)

<p>Circling NA N of Rwy 10-28. If local altimeter setting not received, procedure NA. DME/DME RNP-0.3 NA.</p>	<p>MALS</p>	<p>MISSED APPROACH: Climb to 2400 direct PEBKY and via 074° track to COY VOR/DME and hold.</p>
---	-------------	--

ATIS <b>135.65</b>	SAN JUAN CENTER <b>128.65 279.6</b>	ST. CROIX TOWER ★ <b>118.6 (CTAF) 239.3</b>	GND CON <b>121.7</b>	UNICOM <b>123.0</b>
-----------------------	--	--	-------------------------	------------------------



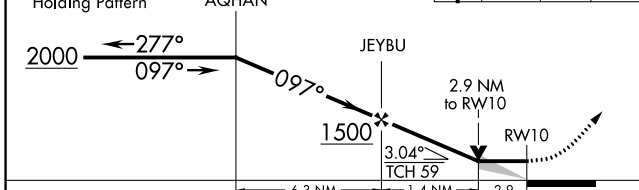
SE-3, 11 JUL 2024 to 08 AUG 2024

SE-3, 11 JUL 2024 to 08 AUG 2024

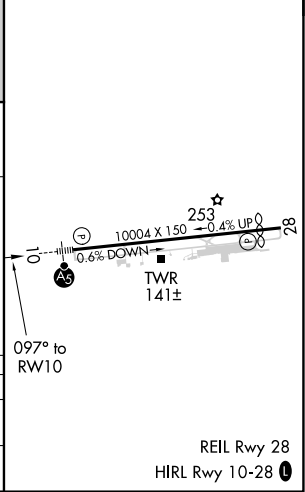
VGSI and descent angles not coincident (VGSI Angle 3.00/TCH 73).

4 NM Holding Pattern AQHAN

2400 PEBKY tr 074° COY



ELEV 74	<b>D</b> TDZE 74
---------	------------------



CATEGORY	A	B	C	D
LNVA MDA	1040-3/4 966 (1000-3/4)	1040-1 966 (1000-1)	1040-2 1/2	966 (1000-2 1/2)
CIRCLING	1040-1 1/4 966 (1000-1 1/4)	1040-1 1/2 966 (1000-1 1/2)	1040-3	966 (1000-3)

REIL Rwy 28  
HIRL Rwy 10-28