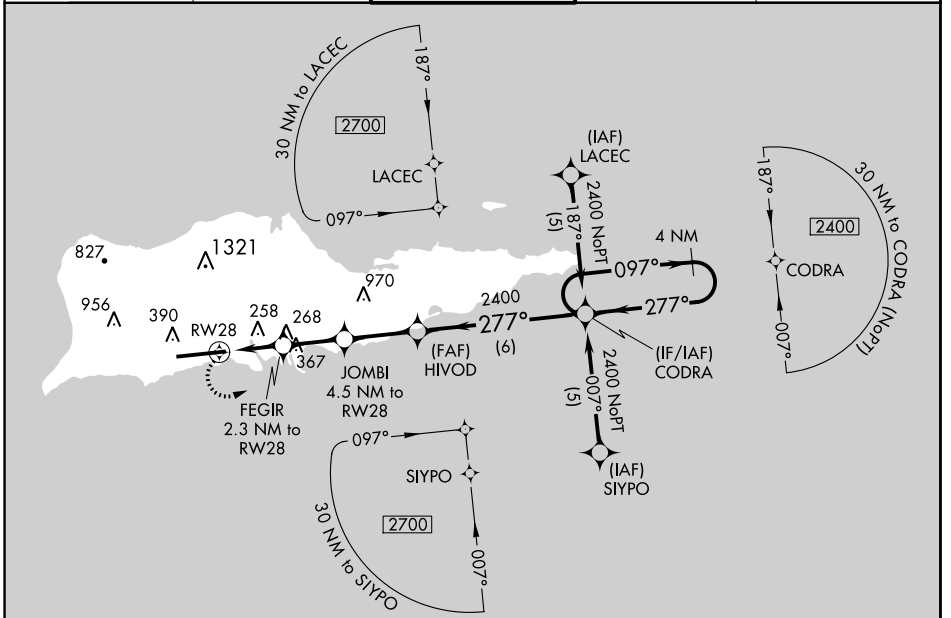


APP CRS <b>277°</b>	Rwy Idg <b>8998</b>
	TDZE <b>40</b>
	Apt Elev <b>74</b>

# RNAV (GPS) RWY 28

HENRY E ROHLSEN (STX)(TISX)

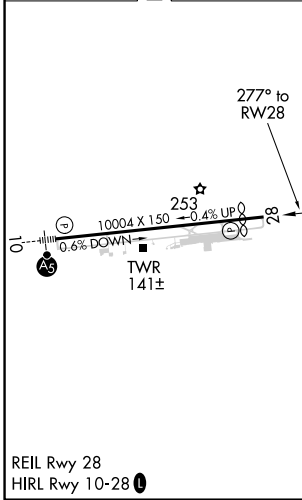
<p><b>⚠</b> Circling NA N of Rwy 10-28. DME/DME RNP-0.3 NA. Visibility reduction by helicopters NA. When local altimeter setting not received, procedure NA.</p>		<p>MISSED APPROACH: Climbing left turn to 2400 direct CODRA and hold.</p>		
ATIS <b>135.65</b>	SAN JUAN CENTER <b>128.65 279.6</b>	ST. CROIX TOWER ★ <b>118.6(CTAF) 239.3</b>	GND CON <b>121.7</b>	UNICOM <b>123.0</b>



SE-3, 11 JUL 2024 to 08 AUG 2024

SE-3, 11 JUL 2024 to 08 AUG 2024

ELEV 74	<b>D</b>	TDZE 40
---------	----------	---------



<p>2400 CODRA</p>		<p>JOMBI 4.5 NM to RW28</p>		<p>HIVOD</p>		<p>CODRA 4 NM Holding Pattern</p>	
<p>RW28 1.4 NM to RW28</p>		<p>FEGR 2.3 NM to RW28</p>		<p>2400</p>		<p>2400</p>	
<p>800</p>		<p>1520</p>		<p>097° →</p>		<p>← 277° 2400</p>	
<p>3.06°</p>		<p>TCH 55</p>		<p>VGSI and descent angles not coincident (VGSI Angle 3.00/TCH 80).</p>		<p>← 277°</p>	
<p>1.4</p>		<p>0.9</p>		<p>2.2</p>		<p>2.6</p>	
<p>6 NM</p>							
CATEGORY	A	B	C	D			
LNAV MDA	560-1	520 (500-1)	560-1½ 520 (500-1½)	560-1¾ 520 (500-1¾)			
CIRCLING	560-1 486 (500-1)	600-1 526 (600-1)	720-1¾ 646 (700-1¾)	720-2 646 (700-2)			