

HI-TACAN Z RWY 30

TACAN MIB Chan 96	APCH CRS 292°	Rwy Idg 13,198 TDZE 1646 Arprt Elev 1666
----------------------	------------------	--

[USAF]

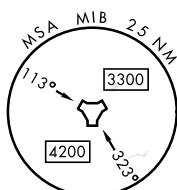
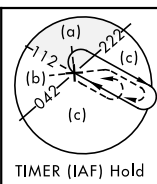
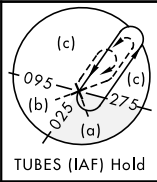
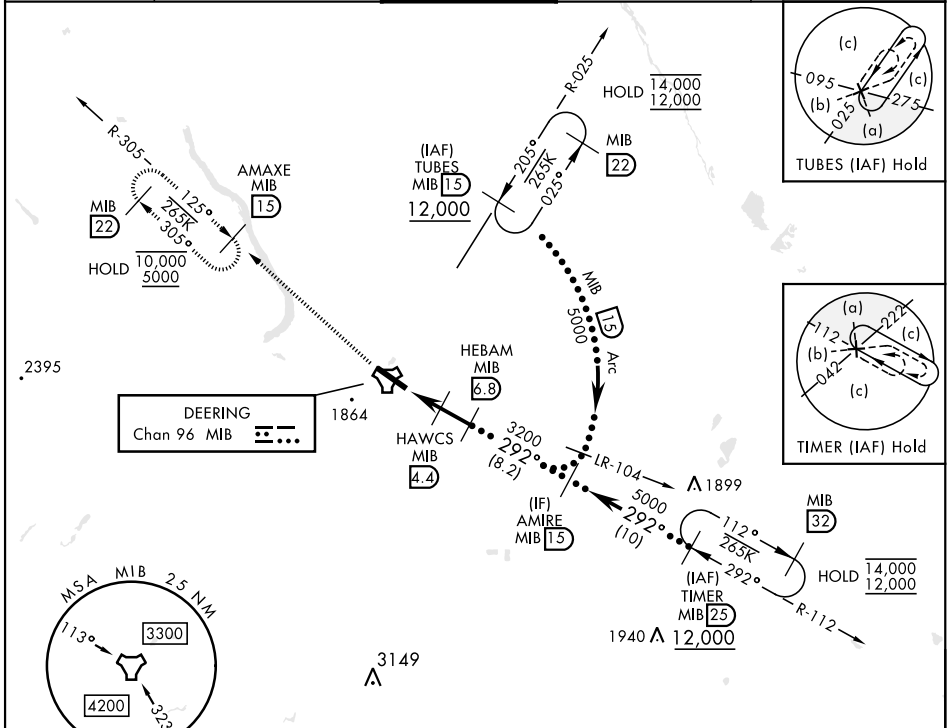
MINOT AFB (KMIB)

* When ALS inop, increase CAT CDE vis to 1 1/2 miles.
 ** Circling not authorized N of Rwy 12-30.



MISSED APPROACH: Climb to 5000 via
 MIB TACAN R-305 direct AMAXE and hold.

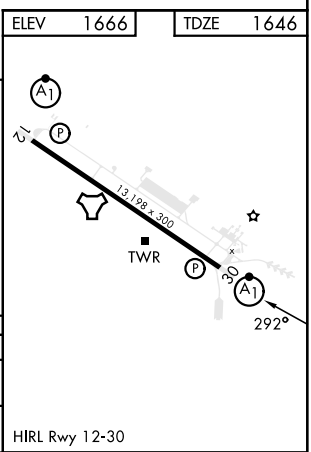
ATIS ★ 278.8	MINOT APP CON 119.6 363.8	MINOT TOWER ★ 120.65 253.5	GND CON 134.0 275.8	CLNC DEL 326.2
-----------------	------------------------------	-------------------------------	------------------------	-------------------



NC-1, 11 JUL 2024 to 08 AUG 2024

NC-1, 11 JUL 2024 to 08 AUG 2024

ELEV 1666	TDZE 1646		
5000 MIB R-305	AMAXE MIB 15		
MIB TACAN	MIB 3.2		
GEVGE MIB 1.9	HAWCS MIB 4.4		
HEBAM MIB 6.8	AMIRE MIB 15		
3200	5000		
2520	2.62°		
TCH 49			
0.4	2.5 NM		
	2.4 NM		
CATEGORY	C	D	E
S-30 *	2100/45	454 (500-7/8)	
CIRCLING **	2180-1 1/2 514 (600-1 1/2)	2320-2 654 (700-2)	2320-2 1/4 654 (700-2 1/4)
	HIRL Rwy 12-30		



HI-TACAN Z RWY 30