

WAAS CH <b>40330</b> <b>W28A</b>	APP CRS <b>285°</b>	Rwy Idg <b>5018</b> TDZE <b>50</b> Apr Elev <b>52</b>
--	------------------------	---

# RNAV (GPS) RWY 28L

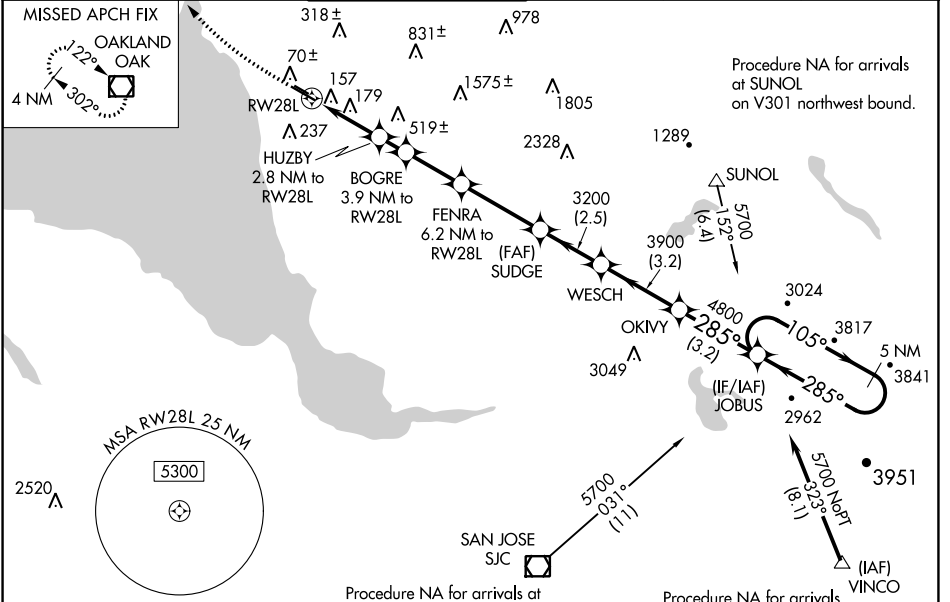
HAYWARD EXEC (HWD)

**RNP APCH.**

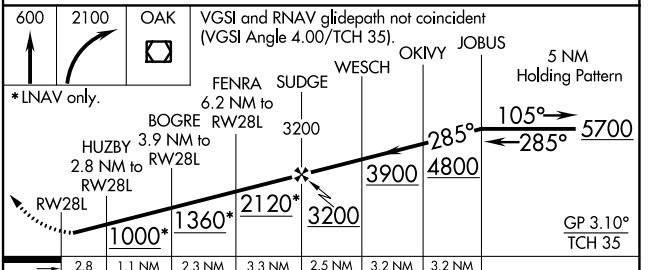
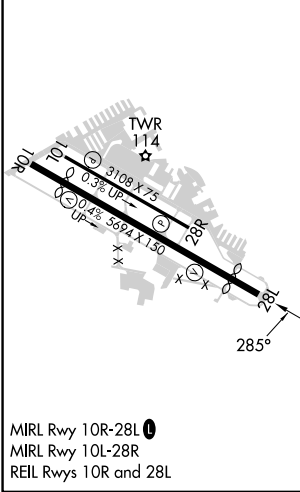
Baro-VNAV NA. When local altimeter setting not received, use Oakland altimeter setting: increase all DA/MDA 20 feet, and LNAV/VNAV all Cats and LNAV Cat C/D visibility 1/8 SM and Circling Cat D visibility 1/4 SM. Circling NA north of Rwy 10L-28R. Rwy 28L: Helicopter visibility reduction below 3/4 SM NA.

MISSED APPROACH: Climb to 600 then climbing right turn to 2100 direct OAK VOR/DME and hold.

ATIS <b>126.7</b>	NORCAL APP CON <b>124.4 351.8</b>	HAYWARD TOWER * <b>120.2 (CTAF) 0 257.8</b>	GND CON <b>121.4</b>	CLNC DEL <b>128.05</b>	UNICOM <b>122.95</b>
----------------------	--------------------------------------	--	-------------------------	---------------------------	-------------------------



ELEV 52	TDZE 50
---------	---------



CATEGORY	A	B	C	D
LPV DA		348-1	298 (300-1)	
LNAV/VNAV DA		400-1 1/8	350 (400-1 1/8)	
LNAV MDA	460-1	410 (500-1)	460-1 1/8	410 (500-1 1/8)
CIRCLING	540-1	488 (500-1)	540-1 1/2	920-2 3/4
			488 (500-1 1/2)	868 (900-2 3/4)

SW-2, 11 JUL 2024 to 08 AUG 2024

SW-2, 11 JUL 2024 to 08 AUG 2024