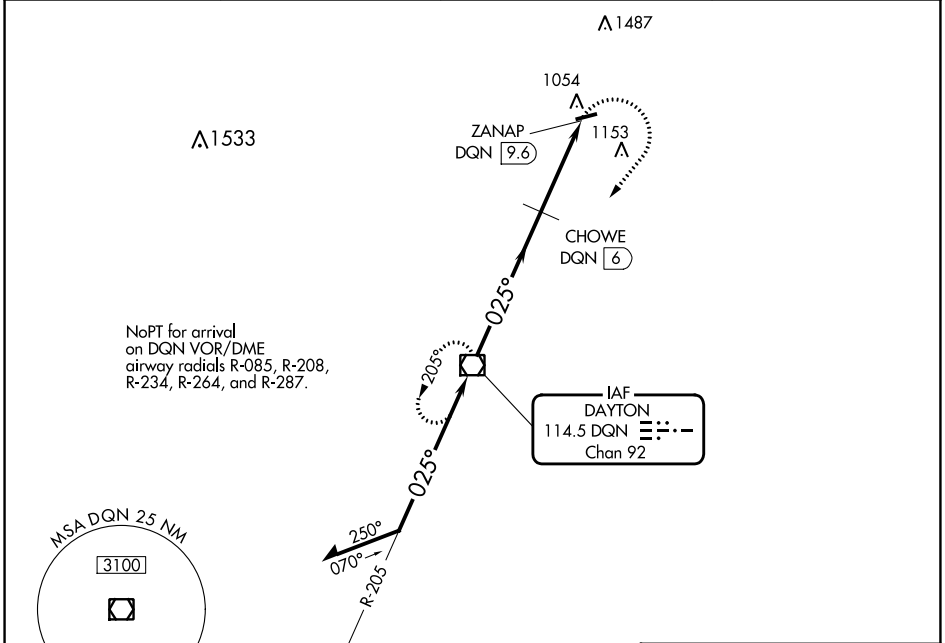


VOR/DME DGN 114.5 Chan 92	APP CRS 025°	Rwy Idg TDZE Apt Elev N/A N/A 993
---	------------------------	---

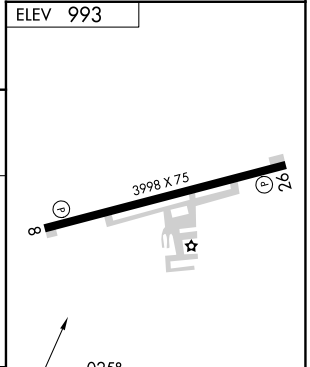
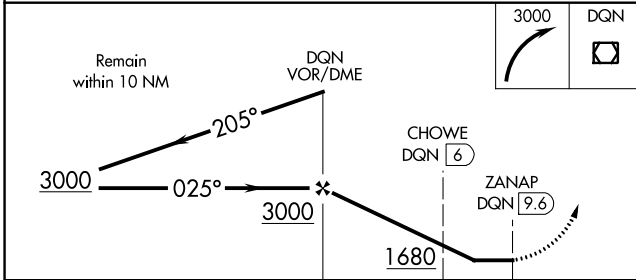
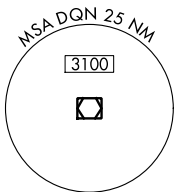
VOR-A
PIQUA/HARTZELL FLD (I17)

NA Use James M Cox Dayton Intl altimeter setting.	MISSED APPROACH: Climbing right turn to 3000 direct DGN VOR/DME and hold.
--	---

DAY ASOS 125.8	VES AWOS-3T 125.9	COLUMBUS APP CON 134.45 294.5 352.05	UNICOM 123.0 (CTAF) 0
--------------------------	-----------------------------	--	--



NoPT for arrival on DGN VOR/DME airway radials R-085, R-208, R-234, R-264, and R-287.



CATEGORY	A	B	C	D
CIRCLING	1680-1 687 (700-1)	1680-2 687 (700-2)	1880-3 887 (900-3)	
CHOWE FIX MINIMUMS (DME REQUIRED)				
CIRCLING	1500-1 507 (600-1)	1560-1 567 (600-1)	1560-1½ 567 (600-1½)	1880-3 887 (900-3)

FAF to MAP 9.6 NM					
Knots	60	90	120	150	180
Min:Sec	9:36	6:24	4:48	3:50	3:12

EC-2, 11 JUL 2024 to 08 AUG 2024

EC-2, 11 JUL 2024 to 08 AUG 2024