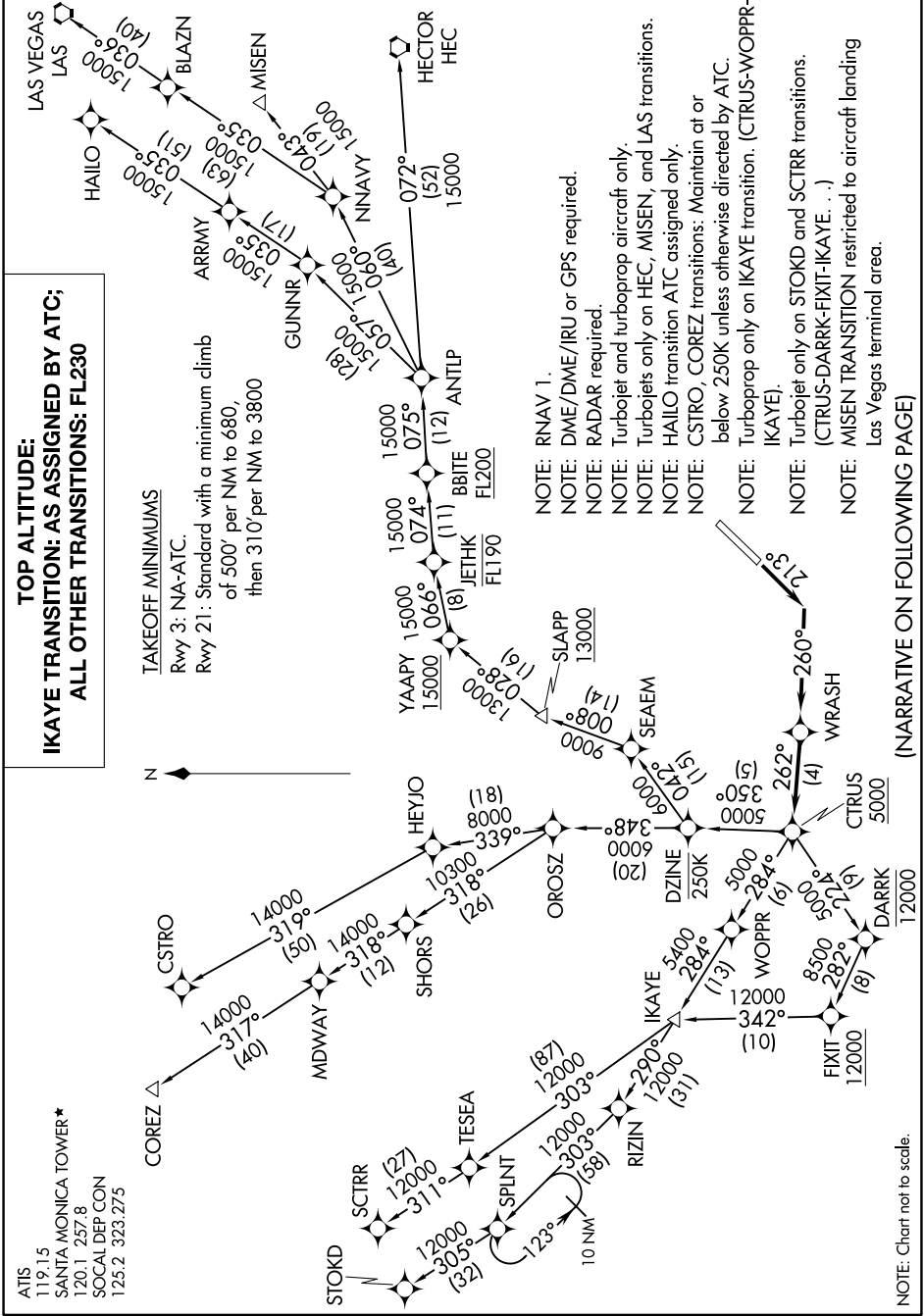


CTRUS FOUR DEPARTURE (RNAV)

AL-5023 (FAA)

SANTA MONICA MUNI (SMO)
SANTA MONICA, CALIFORNIA

SW-3, 11 JUL 2024 to 08 AUG 2024



ATIS 119.15
 SANTA MONICA TOWER* 120.1 257.8
 SOCIAL DEP CON 125.2 323.275

TAKEOFF MINIMUMS
 Rwy 3: NA-ATC.
 Rwy 21: Standard with a minimum climb of 50' per NM to 680, then 310' per NM to 3800

**TOP ALTITUDE:
 IKAYE TRANSITION: AS ASSIGNED BY ATC;
 ALL OTHER TRANSITIONS: FL230**

NOTE: RNAV 1.
 NOTE: DME/DME/IRU or GPS required.
 NOTE: RADAR required.
 NOTE: Turbojet and turboprop aircraft only.
 NOTE: Turbojets only on HEC, MISEN, and LAS transitions.
 NOTE: HALO transition ATC assigned only.
 NOTE: CSTRO, COREZ transitions: Maintain at or below 250K unless otherwise directed by ATC.
 NOTE: Turboprop only on IKAYE transition. (CTRUS-WOPPR- IKAYE).
 NOTE: Turbojet only on STOKD and SCTRR transitions. (CTRUS-DARRK-FIXIT- IKAYE. ...)
 NOTE: MISEN TRANSITION restricted to aircraft landing Las Vegas terminal area.

(NARRATIVE ON FOLLOWING PAGE)

NOTE: Chart not to scale.

SW-3, 11 JUL 2024 to 08 AUG 2024

CTRUS FOUR DEPARTURE (RNAV)

SANTA MONICA, CALIFORNIA
SANTA MONICA MUNI (SMO)