

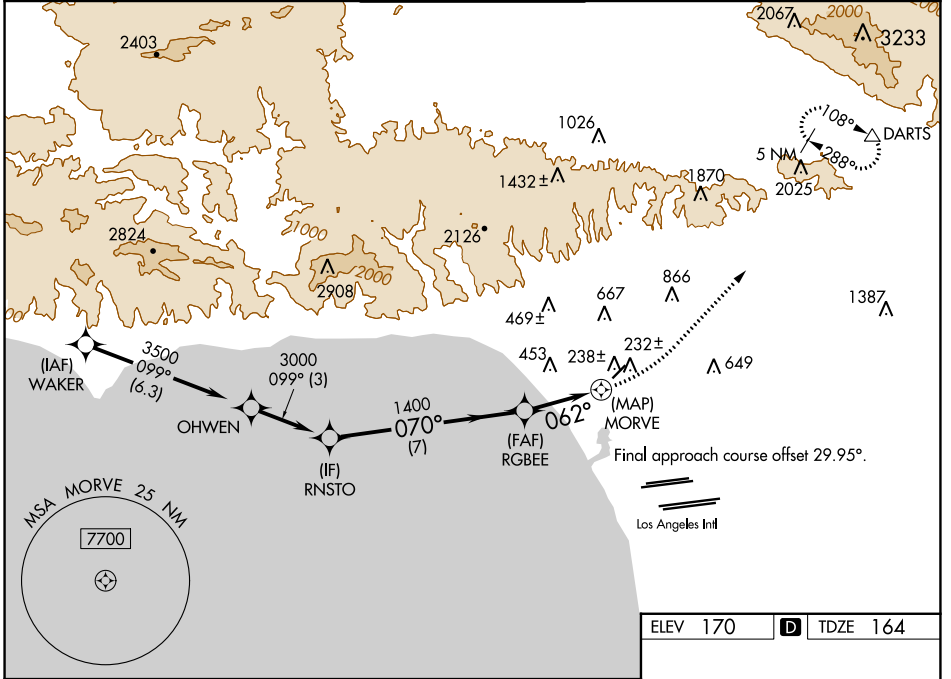
WAAS CH 77839 W03B	APP CRS 062°	Rwy Idg TDZE 164 Apt Elev 170	3500
--	------------------------	---	-------------

RNAV (GPS) Z RWY 3

SANTA MONICA MUNI (SMO)

<p>▽ MISSED APPROACH: Climb to 600 then climbing left turn to 5000 direct DARTS and hold, do not exceed 175K when continuing climb-in-hold to 5000. *Missed approach requires minimum climb of 290 feet per NM to 3800.</p>	<p>▲ Rwy 3 helicopter visibility reduction below 1 SM NA. DME/DME RNP-0.3 NA.</p>
--	--

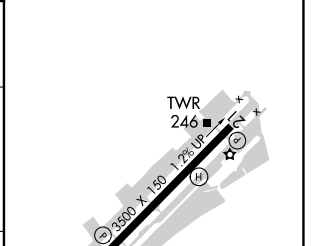
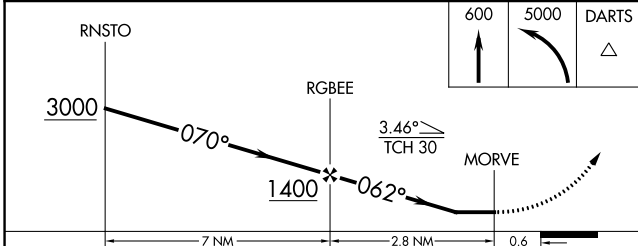
ATIS 119.15	SOCAL APP CON 135.05 317.5	SANTA MONICA TOWER * 120.1 (CTAF) 257.8	GND CON 121.9	UNICOM 122.95
-----------------------	--------------------------------------	---	-------------------------	-------------------------



SW-3, 11 JUL 2024 to 08 AUG 2024

SW-3, 11 JUL 2024 to 08 AUG 2024

ELEV 170	D TDZE 164
----------	-------------------



CATEGORY	A	B	C	D
LP MDA*	460-1	296 (300-1)		NA
LP MDA	1260-1 1/4 1096 (1100-1 1/4)	1260-1 1/2 1096 (1100-1 1/2)		NA
LNAV MDA*	500-1	336 (400-1)		NA
LNAV MDA	1380-1 1/4 1216 (1300-1 1/4)	1380-1 1/2 1216 (1300-1 1/2)		NA

MIRL Rwy 3-21 ①
REIL Rwy 21 ①