

WAAS CH <b>42528</b> <b>W24A</b>	APP CRS <b>238°</b>	Rwy Idg <b>5000</b> TDZE <b>873</b> Apt Elev <b>876</b>
--	------------------------	---

# RNAV (GPS) RWY 24

CUYAHOGA COUNTY (CGF)

RNP APCH.

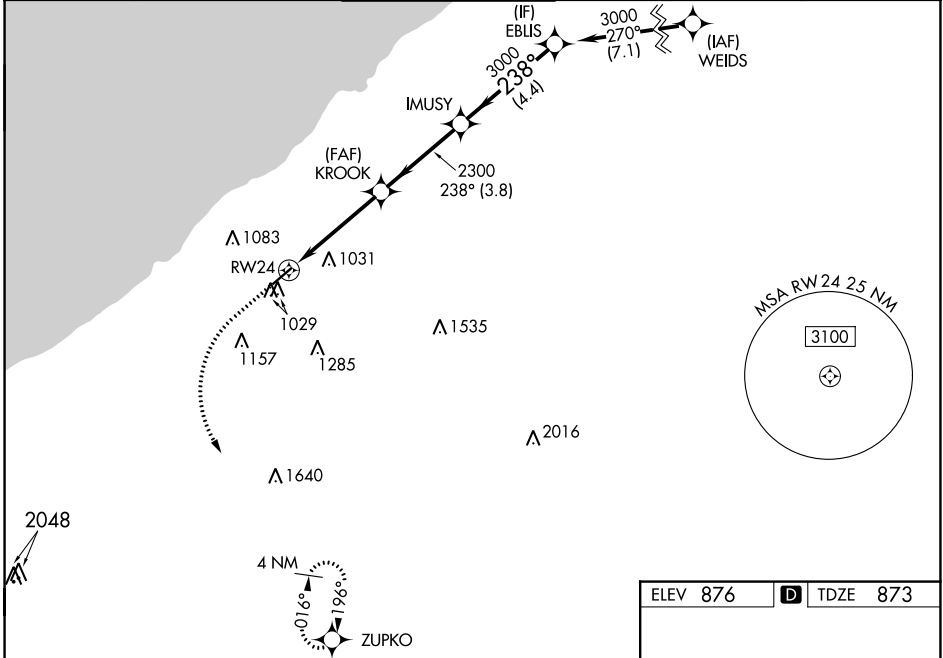
**⚠** For uncompensated Baro-VNAV systems, LNAV/VNAV NA below -16°C or above 38°C. For inop ALS increase LNAV/VNAV visibility all Cats to 7/8 SM, LNAV Cat C, D to 1 1/8 SM.

MALSR



**MISSED APPROACH:**  
Climb to 2500 then climbing left turn to 3000 direct ZUPKO and hold.

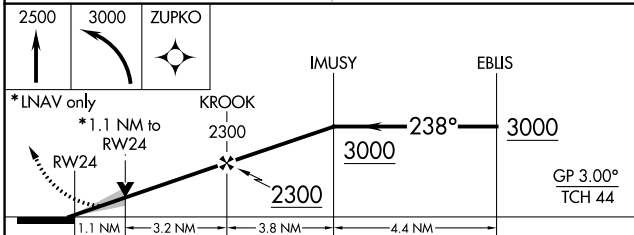
D-ATIS <b>119.95</b>	CLEVELAND APP CON <b>125.35 346.325</b>	COUNTY TOWER★ <b>118.5 (CTAF)</b> <b>⓪</b>	GND CON <b>121.85</b>	CLNC DEL <b>121.85</b> (when tower closed)
-------------------------	--	---	--------------------------	--



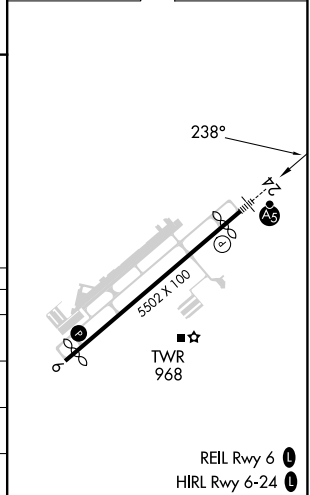
EC-2, 11 JUL 2024 to 08 AUG 2024

EC-2, 11 JUL 2024 to 08 AUG 2024

ELEV 876	<b>D</b> TDZE 873
----------	-------------------



CATEGORY	A	B	C	D
LPV DA		1073-1/2	200 (200-1/2)	
LNAV/VNAV DA		1178-1/2	305 (400-1/2)	
LNAV MDA	1280-1/2	407 (500-1/2)	1280-3/4	407 (500-3/4)
<b>C</b> CIRCLING	1400-1 524 (600-1)	1500-1 624 (700-1)	1560-2 684 (700-1)	1620-2 1/2 744 (800-2 1/2)



REIL Rwy 6 **⓪**  
HIRL Rwy 6-24 **⓪**