

APP CRS	Rwy Idg	3725
300°	TDZE	644
	Apt Elev	647

RNAV (GPS) RWY 30

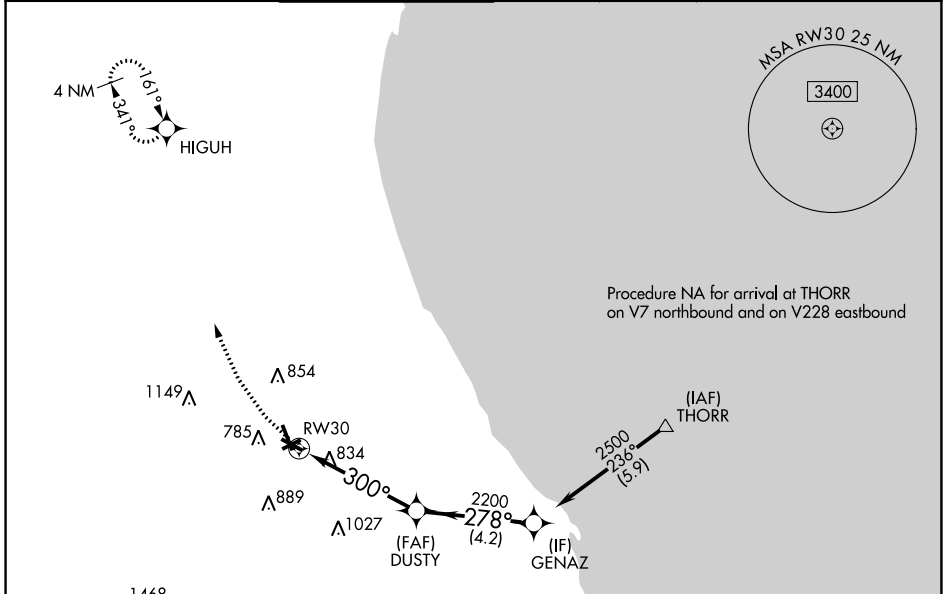
CHICAGO EXEC (PWK)

RNP APCH - GPS.

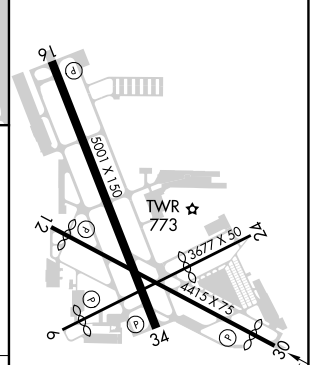
- ▽** Circling Rwy 6, 12, 24, 30 NA at night.
- ▲** Rwy 30 Straight-in procedure NA at night.
- Rwy 30 helicopter visibility reduction below 1 SM NA.

MISSED APPROACH: Climbing right turn to 2500 direct HIGUH and hold.

ATIS	CHICAGO APP CON	EXECUTIVE TOWER ★	GND CON	CLNC DEL	CLNC DEL	UNICOM
124.2	120.55 306.925	119.9 (CTAF) 0	121.7	124.7	124.7 (When twr closed)	122.95



ELEV 647	D TDZE 644
----------	-------------------



	2500 HIGUH			
		DUSTY	GENAZ	THORR
		2200	2500	2500
		278°	236°	
		300°		
		3.00° TCH 42		
		4.8 NM	4.2 NM	5.9 NM

CATEGORY	A	B	C	D
LNVA MDA	1120-1	476 (500-1)	1120-1 ³ / ₈	476 (500-1 ³ / ₈)
CIRCLING	1140-1 493 (500-1)	1160-1 513 (600-1)	1200-1 ¹ / ₂ 553 (600-1 ¹ / ₂)	1460-2 ³ / ₄ 813 (900-2 ³ / ₄)

- HIRL Rwy 6-24 and 16-34 **0**
- MIRL Rwy 12-30 **0**
- REIL Rws 12 and 30
- REIL Rws 16 and 34 **0**
- RLLS Rwy 16 **0**

EC-3, 11 JUL 2024 to 08 AUG 2024

EC-3, 11 JUL 2024 to 08 AUG 2024