

WAAS CH 97515 W13A	APP CRS 132°	Rwy Idg TDZE 46 Apt Elev 46	7510
--	------------------------	---	-------------


RNAV (GPS) Y RWY 13

CORPUS CHRISTI INTL (CRP)

RNP APCH - GPS.

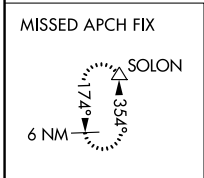
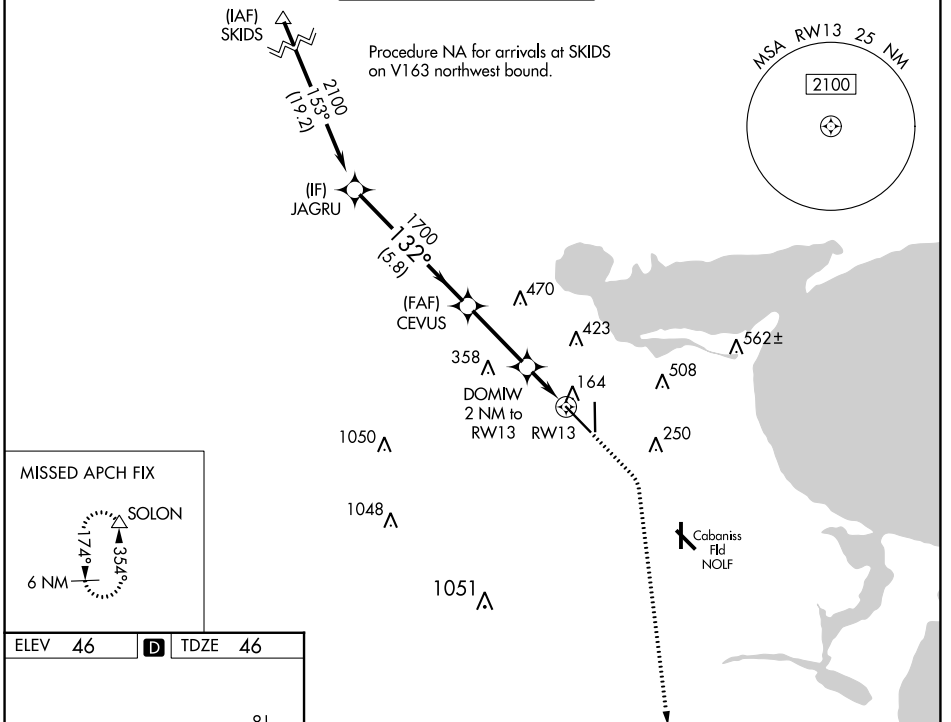
▼ For uncompensated Baro-VNAV systems, LNAV/VNAV NA below -1°C or above 54°C. For inop ALS increase LPV Cat E visibility to RVR 4000, LNAV/VNAV all Cats visibility to RVR 4500, and LNAV Cats C, D, and E visibility to RVR 5500. *RVR 1800 authorized with use of FD or AP or HUD to DA.

MALSR

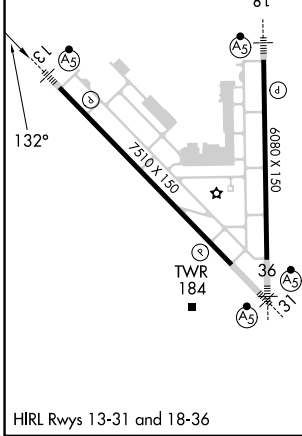


MISSED APPROACH: Climb to 500 then climbing right turn to 2000 direct SOLON and hold.

ATIS 126.8	CORPUS APP CON 120.9 348.725	CORPUS TOWER 119.4 257.8	GND CON 121.9 269.15	CLNC DEL 118.55
----------------------	--	------------------------------------	--------------------------------	---------------------------



ELEV 46	D	TDZE 46
---------	----------	---------



	JAGRU	CEVUS	DOMIW 2 NM to RWY 13	1 NM to RWY 13	RWY 13
	2100	1700	720		
	132°				
	5.8 NM	3 NM	1 NM	1 NM	
CATEGORY	A	B	C	D	E
LPV DA *	246/24		200 (200-½)		
LNAV/VNAV DA	325/24		279 (300-½)		
LNAV MDA	420/24 374 (400-½)		420/35 374 (400-¾)		
C CIRCLING	500-1 454 (500-1)	780-1 734 (800-1)	820-2¼ 774 (800-2¼)	820-2½ 774 (800-2½)	820-2¾ 774 (800-2¾)

SC-3, 11 JUL 2024 to 08 AUG 2024

SC-3, 11 JUL 2024 to 08 AUG 2024