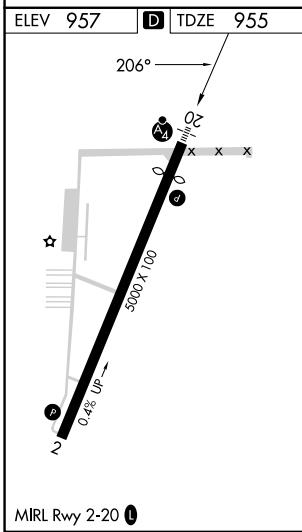
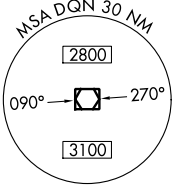
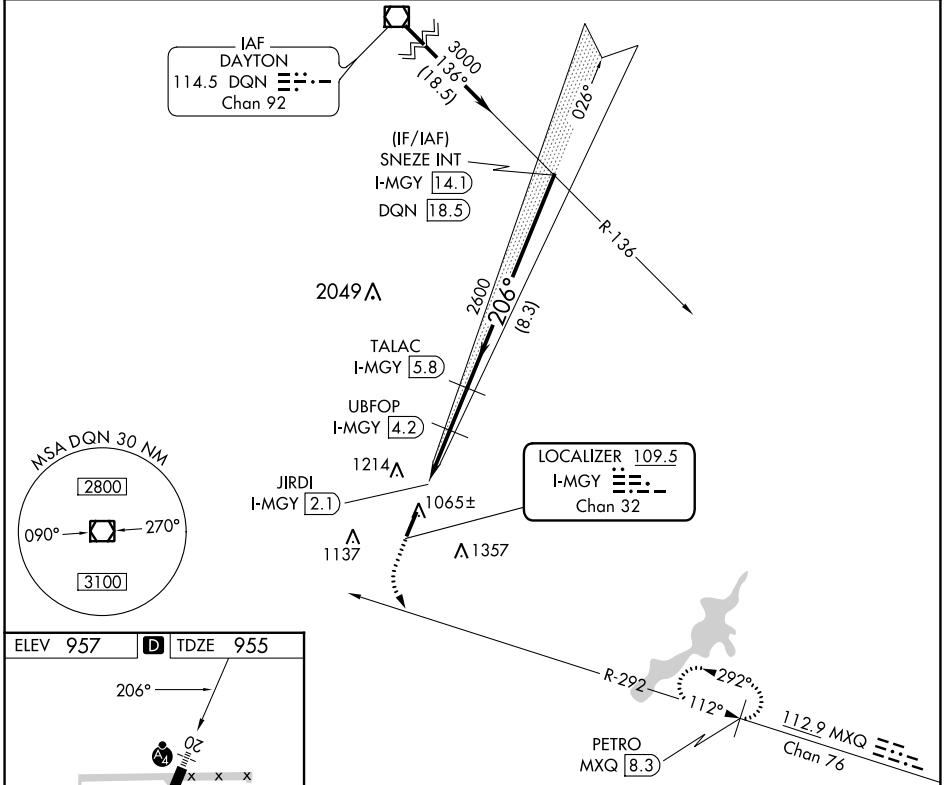


LOC/DME I-MGY 109.5 Chan 32	APP CRS 206°	Rwy ldg 4410 TDZE 955 Apt Elev 957
---	------------------------	---

LOC RWY 20
DAYTON/WRIGHT BROTHERS (MGY)

DME required.		MALS	MISSED APPROACH: Climb to 1600 then climbing left turn to 3000 on heading 118° and MXQ VOR/DME R-292 to PETRO MXQ 8.3 DME and hold.
<p>▼ Rwy 20 helicopter visibility reduction below 3/4 SM NA. ▲ NA Inop table does not apply.</p>			

ASOS 118.375	COLUMBUS APP CON 118.85 269.275	CLNC DEL 119.4	UNICOM 122.8 (CTAF) 0
------------------------	---	--------------------------	---------------------------------



1600	3000	MXQ R-292	PETRO MXQ 8.3	TALAC I-MGY 5.8	SNEZE INT I-MGY 14.1
↑	hdg 118°				3000
UBPOP I-MGY 4.2		JIRDI I-MGY 2.1	TCH 40	2600	2040
1.2		2.1 NM	1.6 NM	8.3 NM	
CATEGORY	A	B	C	D	
S-LOC 20		1320-1 1/2	365 (400-1 1/2)		
CIRCLING	1440-1 1/2 483 (500-1 1/2)	1520-1 1/2 563 (600-1 1/2)	1660-2 703 (800-2)	1660-2 1/4 703 (800-2 1/4)	

EC-2, 11 JUL 2024 to 08 AUG 2024

EC-2, 11 JUL 2024 to 08 AUG 2024