

WAAS CH 45801 W02A	APP CRS 026°	Rwy Idg 4700 TDZE 949 Apt Elev 957
--	------------------------	---

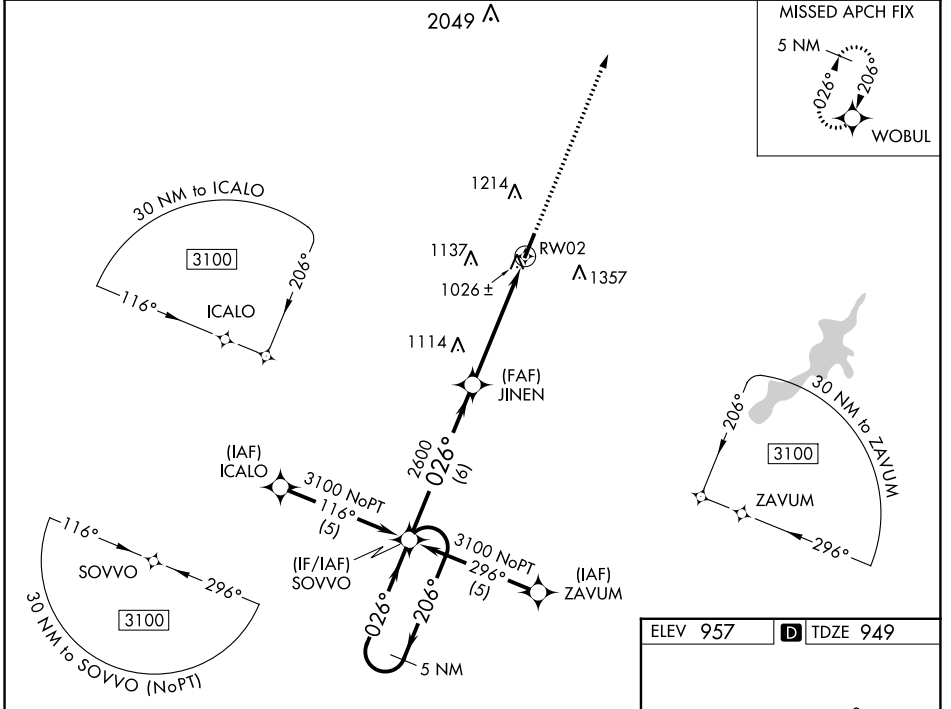
RNAV (GPS) RWY 2

DAYTON/WRIGHT BROTHERS (MGY)

⚠ Baro-VNAV NA when using James M Cox Dayton Intl altimeter setting. For uncompensated Baro-VNAV systems, LNAV/VNAV NA below -16°C (4°F) or above 47°C (116°F). DME/DME RNP-0.3 NA. Visibility reduction for helicopters NA. When local altimeter setting not received, use James M Cox Dayton Intl altimeter setting and increase all DAs/MDAs 60 feet and Circling Cat C/D visibility ¼ SM.

MISSED APPROACH:
Climb to 3100 direct WOBUL and hold.

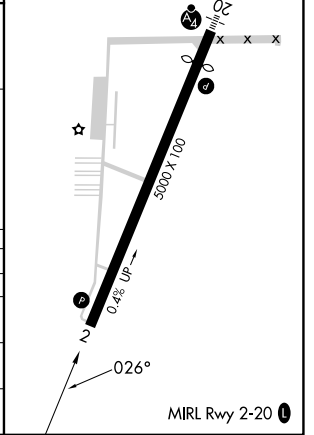
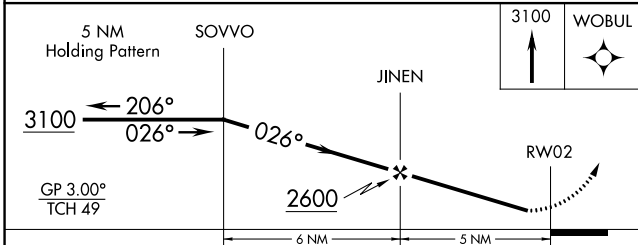
ASOS 118.375	COLUMBUS APP CON 118.85 269.275	CLNC DEL 119.4	UNICOM 122.8 (CTAF) 📻
------------------------	---	--------------------------	--



EC-2, 11 JUL 2024 to 08 AUG 2024

EC-2, 11 JUL 2024 to 08 AUG 2024

ELEV 957	D TDZE 949
----------	-------------------



CATEGORY	A	B	C	D
LPV DA		1214-1	265 (300-1)	
LNAV/VNAV DA		1299-1¼	350 (400-1¼)	
LNAV MDA	1420-1	471 (500-1)	1420-1¼ 471 (500-1¼)	1420-1½ 471 (500-1½)
C CIRCLING	1480-1 ¼ 523 (600-1¼)	1520-1¼ 563 (600-1¼)	1660-2 703 (800-2)	1660-2¼ 703 (800-2¼)