

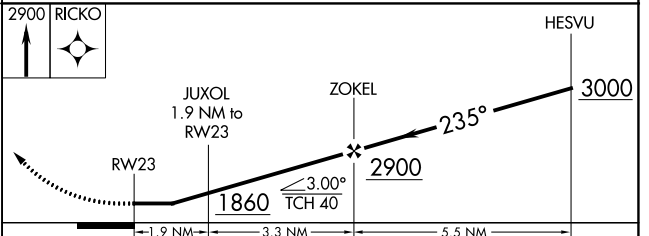
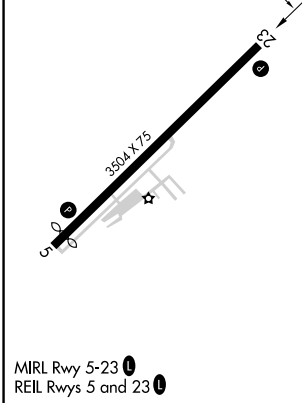
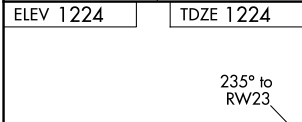
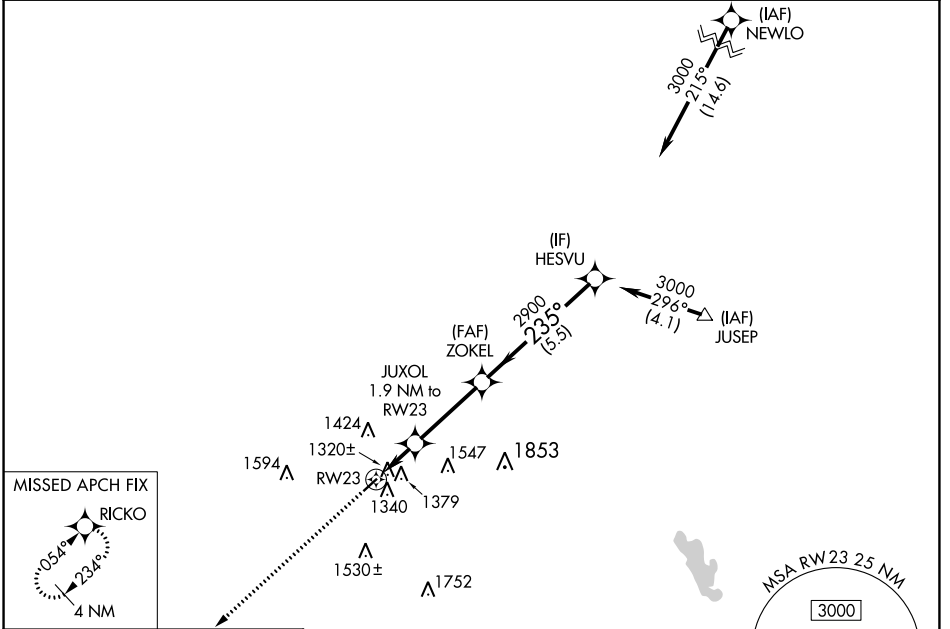
WAAS CH <b>57923</b> <b>W23A</b>	APP CRS <b>235°</b>	Rwy Idg TDZE Apt Elev	<b>3504</b> <b>1224</b> <b>1224</b>
--	------------------------	-----------------------------	---

# RNAV (GPS) RWY 23

GALLION MUNI (GQQ)

<b>NA</b>	Helicopter visibility reduction below 3/4 SM NA. DME/DME RNP-0.3 NA. Use Mansfield altimeter setting. Circling Rwy 5 NA at night.	MISSED APPROACH: Climb to 2900 direct RICKO and hold.
-----------	---	--

CLEVELAND APP CON ★ <b>128.35 360.65</b>	CLNC DEL <b>126.8</b>	UNICOM <b>122.8</b> (CTAF) <b>1</b>
---	--------------------------	--



CATEGORY	A	B	C	D
LP MDA	1620-1	396 (400-1)	1620-1 1/8 396 (400-1 1/8)	NA
LNAV MDA	1760-1	536 (600-1)	1760-1 1/8 536 (600-1 1/8)	NA
CIRCLING	1800-1 576 (600-1)	1960-1 736 (800-1)	1960-2 736 (800-2)	NA

EC-2, 11 JUL 2024 to 08 AUG 2024

EC-2, 11 JUL 2024 to 08 AUG 2024