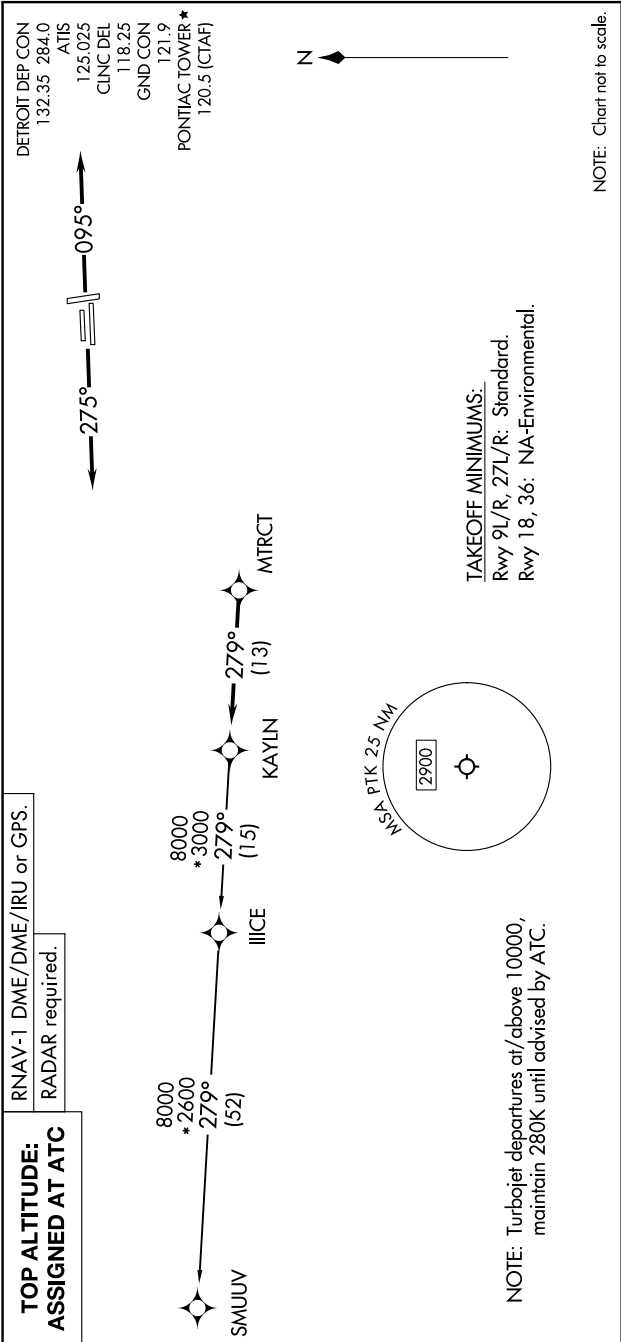


EC-1, 11 JUL 2024 to 08 AUG 2024



**DEPARTURE ROUTE DESCRIPTION**

**TAKEOFF RUNWAYS 9L/R:** Climb on heading 095° or as assigned by ATC, thence....  
**TAKEOFF RUNWAYS 27L/R:** Climb on heading 275° or as assigned by ATC, thence....

....for RADAR vectors to MTRCT, then on track 279° to KAYLN, then on (transition). Maintain ATC assigned altitude, expect filed altitude 10 minutes after departure.

**SMUUV TRANSITION (KAYLN3.SMUUV):**

EC-1, 11 JUL 2024 to 08 AUG 2024