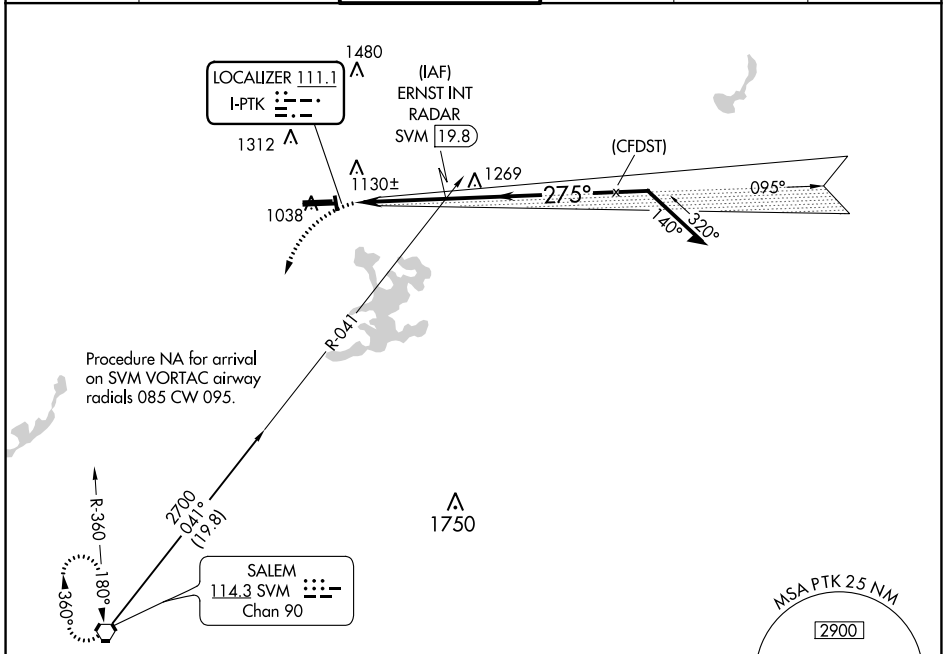


LOC I-PTK 111.1	APP CRS 275°	Rwy Idg 6520
		TDZE 974
		Apt Elev 981

LOC BC RWY 27L
OAKLAND COUNTY INTL (PTK)

<p>⚠ Circling Rwy 9L, 36 NA at night. When local altimeter setting not received, use Coleman A Young Muni altimeter setting and increase all MDA 120 feet, increase S-27L Cat C/D visibility 3/8 SM and Circling Cat C/D visibility 1/2 SM.</p>	<p>MISSED APPROACH: Climbing left turn to 3000 direct SVM VORTAC and hold.</p>
--	---

ATIS 125.025	DETROIT APP CON 132.35 284.0	PONTIAC TOWER * 120.5 (CTAF) 0	GND CON 121.9	CLNC DEL 118.25	UNICOM 122.95
------------------------	--	--	-------------------------	---------------------------	-------------------------

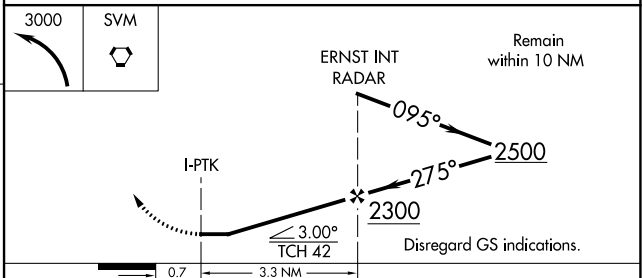
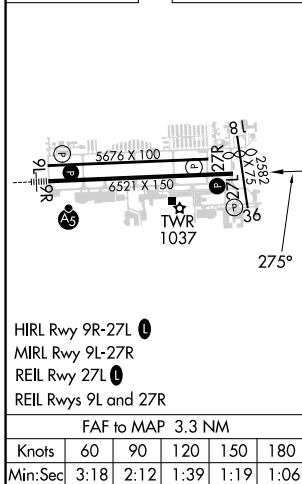


EC-1, 11 JUL 2024 to 08 AUG 2024

EC-1, 11 JUL 2024 to 08 AUG 2024

ELEV 981	D	TDZE 974
----------	----------	----------

BACK COURSE



CATEGORY	A	B	C	D
S-LOC 27L	1440-1	466 (500-1)	1440-1 3/8	466 (500-1 3/8)
C CIRCLING	1500-1 519 (600-1)	1540-1 559 (600-1)	1640-1 3/4 659 (700-1 3/4)	1640-2 659 (700-2)