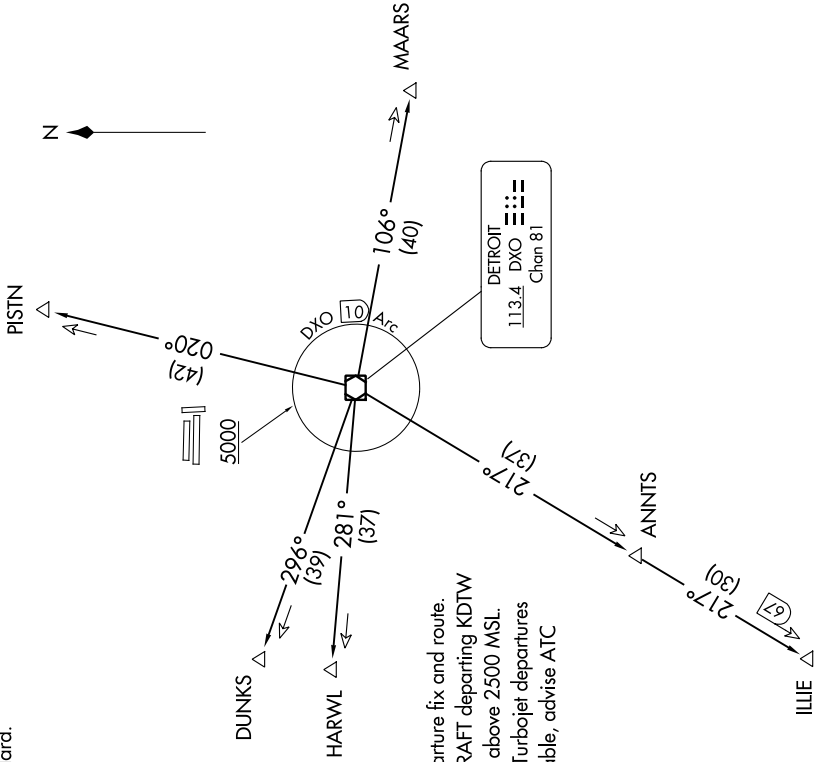


**TOP ALTITUDE:**  
3000



### TAKEOFF MINIMUMS

Rwy 18, 36: NA - Environmental.  
Rwys 9L/R, 27L/R: Standard.

ATIS 125.025  
CLNC DEL 118.25  
GND CON 1121.9  
PONTIAC TOWER ★  
120.5 (CTAF)  
DETROIT DEP CON  
132.35 284.0

NOTE: RADAR required.  
NOTE: DME required.  
NOTE: For use by non-RNAV equipped aircraft only.

### SPECIAL INSTRUCTIONS:

When using this departure, file the appropriate depicted departure fix and route. Aircraft over HARWL must file FL220 and below. PROP AIRCRAFT departing KDTW Rwy 21L/R and 22L/R westbound, cross DXO 3.5 DME at or above 2500 MSL. Aircraft landing Cleveland (CLE) must file MAARS transition. Turbojet departures at/above 10000, maintain 280K until advised by ATC. If unable, advise ATC prior to departure.

(NARRATIVE ON FOLLOWING PAGE)

NOTE: Chart not to scale.