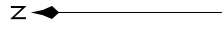
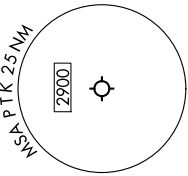


EC-1, 11 JUL 2024 to 08 AUG 2024

RNAV 1 - DME/DME/IRU or GPS.
RADAR required.

ATIS
125.025
CLNC DEL
118.25
GND CON
121.9
PONTIAC TOWER *
120.5 (CTAF)
DETROIT DEP CON
132.35 284.0

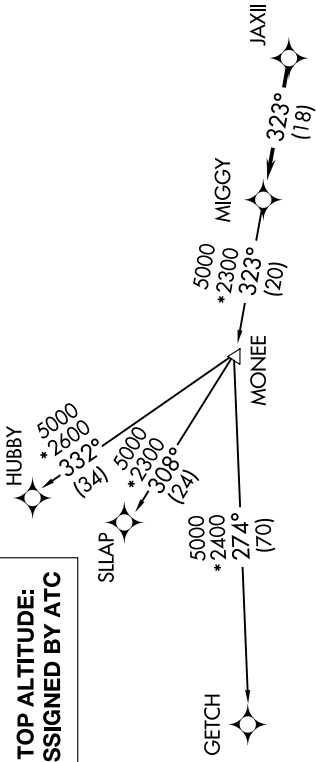


TAKEOFF MINIMUMS:

Rwys 18, 36: NA - Environmental.
Rwys 9L/R, 27L/R: Standard.

NOTE: Chart not to scale.

**TOP ALTITUDE:
ASSIGNED BY ATC**



NOTE: Jet departures at/above 10000,
maintain 280K until advised by ATC.
NOTE: GETCH TRANSITION: For use by KMKE area
arrivals only, or as assigned by ATC.

DEPARTURE ROUTE DESCRIPTION

TAKEOFF RUNWAYS 9L/R: Climb on heading 095° or as assigned by ATC,
thence....
TAKEOFF RUNWAYS 27L/R: Climb on heading 275° or as assigned by ATC,
thence....
....for RADAR vectors to JAXII, then on track 323° to MIGGY, then on
(transition). Maintain 17000 or as assigned by ATC, expect filed altitude
10 minutes after departure.

GETCH TRANSITION (MIGGY3.GETCH):
HUBBY TRANSITION (MIGGY3.HUBBY):
SLLAP TRANSITION (MIGGY3.SLLAP):

EC-1, 11 JUL 2024 to 08 AUG 2024