

| | | | |
|--|------------------------|-----------------------------|---------------------------------------|
| WAAS CH 58110 W36A | APP CRS 004° | Rwy Idg TDZE Apt Elev | 6347 80 90 |
|--|------------------------|-----------------------------|---------------------------------------|

RNAV (GPS) RWY 36

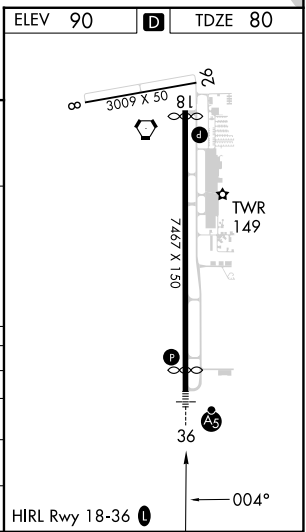
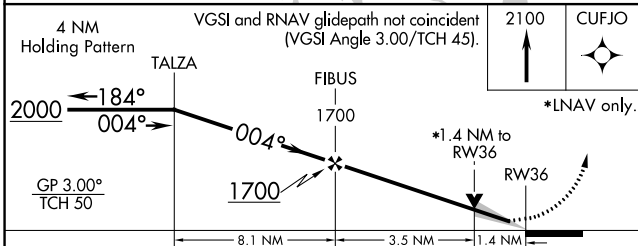
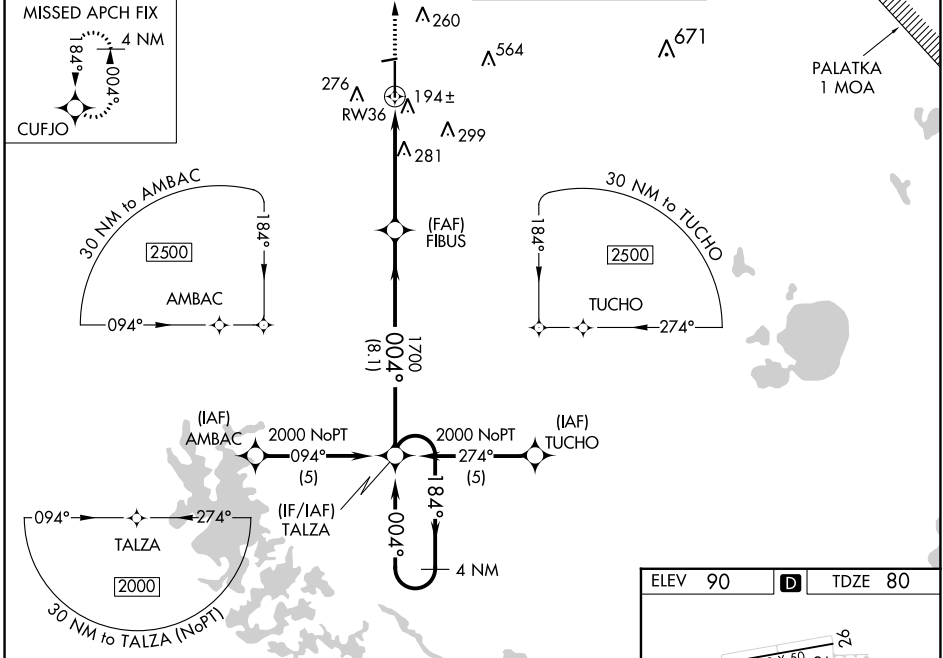
OCALA INTL-JIM TAYLOR FLD (OCF)

⚠ For uncompensated Baro-VNAV systems, LNAV/VNAV NA below -15°C (5°F) or above 48°C (118°F). DME/DME RNP-0.3 NA. When local altimeter setting not received, use Gainesville altimeter setting: Increase LPV DA to 361 feet, increase LNAV/VNAV DA to 644 feet and all MDAs 100 feet; increase LNAV/VNAV all Cats and LNAV visibility Cats C/D ¼ SM, increase Circling visibility Cat C ½ SM and Cat D ¼ SM. VDP and Baro-VNAV NA when using Gainesville altimeter setting. Inop table does not apply to LPV when using local altimeter setting. For inop MALSRS, increase LNAV Cats A and B visibility to 1 mile. For inop MALSRS when using Gainesville altimeter setting, increase LNAV Cats A and B visibility to 1 mile.

MALSRS

MISSED APPROACH:
Climb to 2100 direct CUFJO and hold.

| | | | |
|-------------------------------|--|--|--------------------------------|
| ATIS 128.125 | JACKSONVILLE APP CON 118.6 251.15 | OCALA TOWER * 119.25 (CTAF) 0 | GND CON 121.4 |
|-------------------------------|--|--|--------------------------------|



| CATEGORY | A | B | C | D |
|--------------|-------------------|---|---------------------|---|
| LPV DA | 280-¾ | | 200 (200-¾) | |
| LNAV/VNAV DA | 563-1¼ | | 483 (500-1¼) | |
| LNAV MDA | 540-¾ | | 460 (500-¾) | |
| CIRCLING | 600-1 510 (600-1) | | 760-1¾ 670 (700-1¾) | |
| | | | 920-2¾ 830 (900-2¾) | |

SE-3, 11 JUL 2024 to 08 AUG 2024

SE-3, 11 JUL 2024 to 08 AUG 2024