

OCALA, FLORIDA

AL-5055 (FAA)

24193

VORTAC OCF 113.7 Chan 84	APP CRS 354°	Rwy Idg 6347 TDZE 80 Apt Elev 90
--	------------------------	---

VOR RWY 36

OCALA INTL-JIM TAYLOR FLD (OCF)

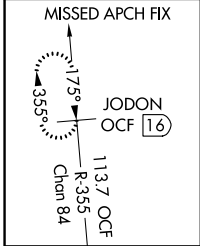
DME required.

▲ For inop ALS, increase S-36 Cats A/B visibility to 1 SM.

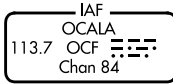


MISSED APPROACH: Climb to 2000 on OCF VORTAC R-355 to JODON/OCF VORTAC 1.6 DME and hold.

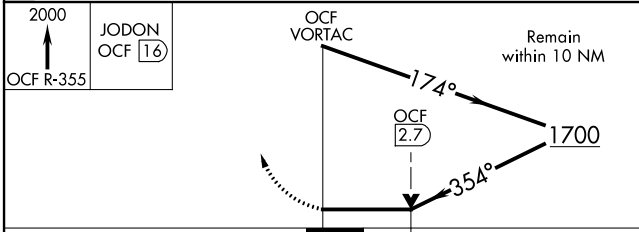
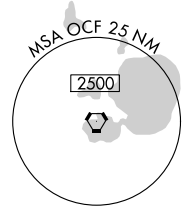
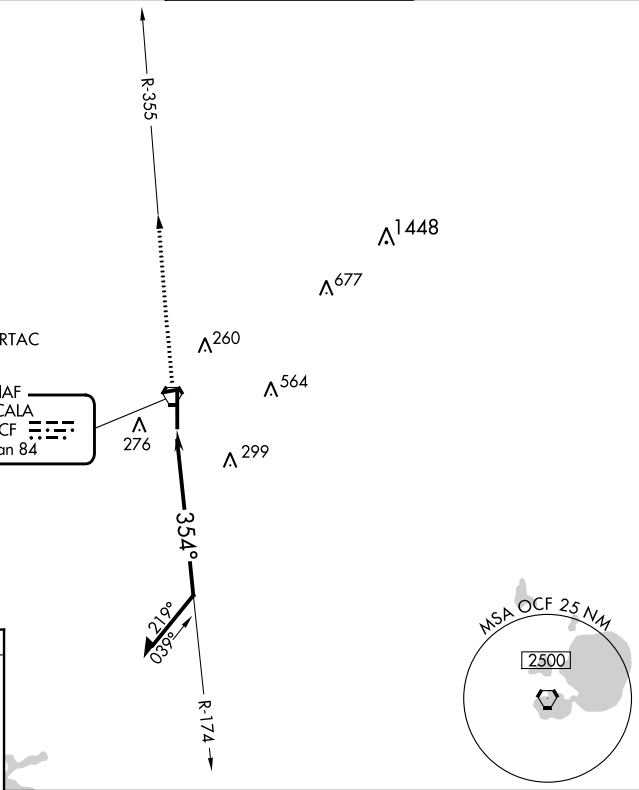
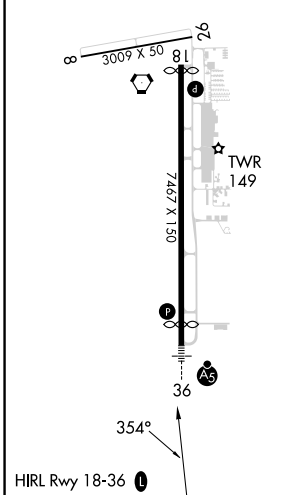
ATIS 128.125	JACKSONVILLE APP CON 118.6 251.15	OCALA TOWER ★ 119.25 (CTAF) 0	GND CON 121.4
------------------------	---	---	-------------------------



Procedure NA for arrival on OCF VORTAC
airway radials 129 CW 208.



ELEV 90	D	TDZE 80
---------	----------	---------



CATEGORY	A	B	C	D
S-36	640-3/4	560 (600-3/4)	640-1 1/8	560 (600-1 1/8)
CIRCLING	640-1	550 (600-1)	760-1 3/4 670 (700-1 3/4)	920-2 3/4 830 (900-2 3/4)

OCALA, FLORIDA
Amdt 19 23FEB23

29°10'N-82°13'W

OCALA INTL-JIM TAYLOR FLD (OCF) VOR RWY 36

SE-3, 11 JUL 2024 to 08 AUG 2024

SE-3, 11 JUL 2024 to 08 AUG 2024