

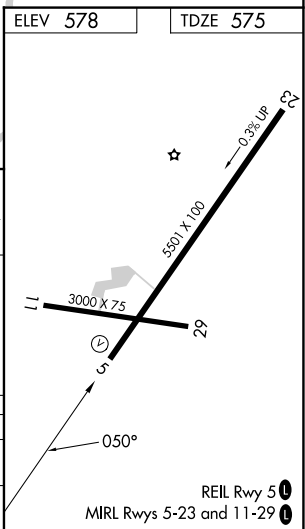
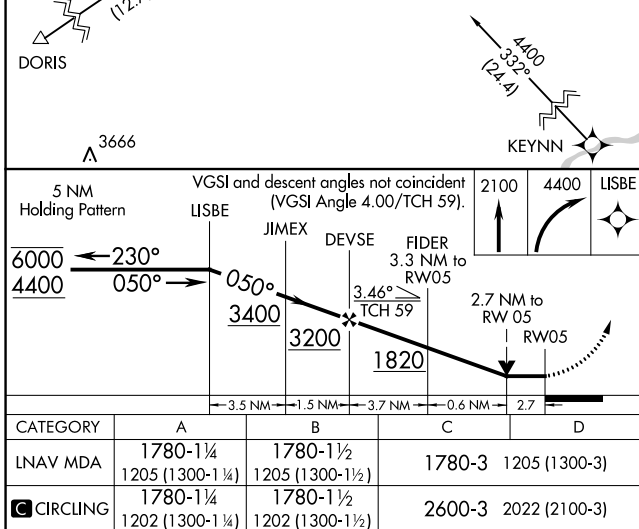
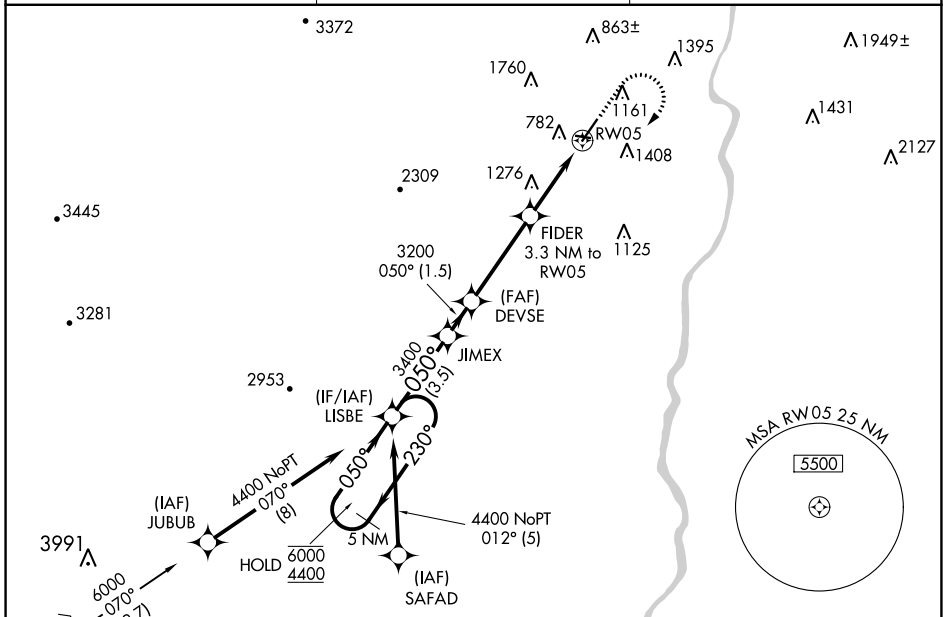
APP CRS <b>050°</b>	Rwy Idg TDZE Apt Elev	<b>5501</b> <b>575</b> <b>578</b>
------------------------	-----------------------------	---

# RNAV (GPS) RWY 5

HARTNESS STATE (SPRINGFIELD) (V5F)

RNP APCH - GPS.	MISSED APPROACH: Climb to 2100 then climbing right turn to 4400 direct LISBE and hold.
<p>⚠ Circling Rwy 11, 23, 29 NA at night.</p> <p>⚠ Rwy 5 helicopter visibility reduction below ¾ SM NA.</p> <p>❄ -20°C</p>	

ASOS <b>121.425</b>	BOSTON CENTER <b>134.7 269.475</b>	UNICOM <b>122.8 (CTAF) 0</b>
------------------------	---------------------------------------	---------------------------------



NE-1, 11 JUL 2024 to 08 AUG 2024

NE-1, 11 JUL 2024 to 08 AUG 2024