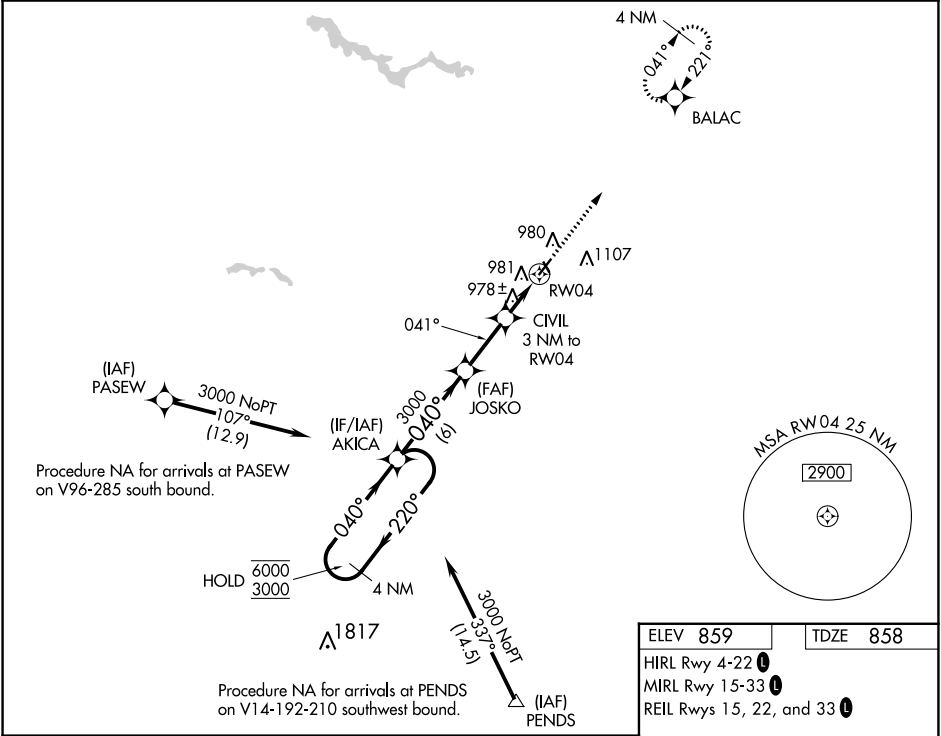


WAAS CH 60906 W04A	APP CRS 041°	Rwy Idg TDZE Apt Elev	6011 858 859
--	------------------------	-----------------------------	---

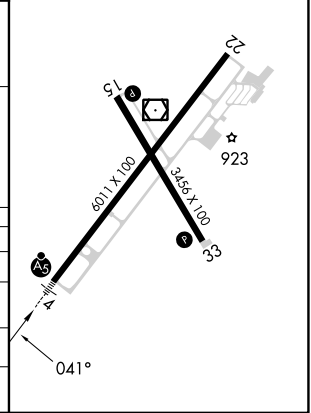
RNAV (GPS) RWY 4

MARION MUNI - MCKINNEY FLD (MZZ)

RNP APCH - GPS.		MALSR	MISSED APPROACH: Climb to 3000 direct BALAC and hold.
<p>For uncompensated Baro-VNAV systems, LNAV/VNAV NA below -16°C or above 54°C. Circling to Rwy 15 NA at night.</p>			
AWOS-3 108.6	GRISSOM APP CON ★ 121.05 338.275	CLNC DEL 120.0	UNICOM 122.7 (CTAF) 0



4 NM Holding Pattern		AKICA	JOSKO	CIVIL 3 NM to RW04	BALAC
6000 ← 220°		040° →		3000 ↑	
3000 ← 040° →		041° →		1 NM to RW04	
GP 3.00° TCH 52		3000		1860	
		6 NM		3.6 NM	2 NM
CATEGORY	A	B	C	D	
LPV DA		1058-1/2	200 (200-1/2)		
LNAV/VNAV DA		1247-5/8	389 (400-5/8)		
LNAV MDA	1240-1/2	382 (400-1/2)	1240-5/8	382 (400-5/8)	
CIRCLING	1300-1 441 (500-1)	1320-1 461 (500-1)	1420-1 1/2 561 (600-1 1/2)	1500-2 641 (700-2)	



EC-2, 11 JUL 2024 to 08 AUG 2024

EC-2, 11 JUL 2024 to 08 AUG 2024