

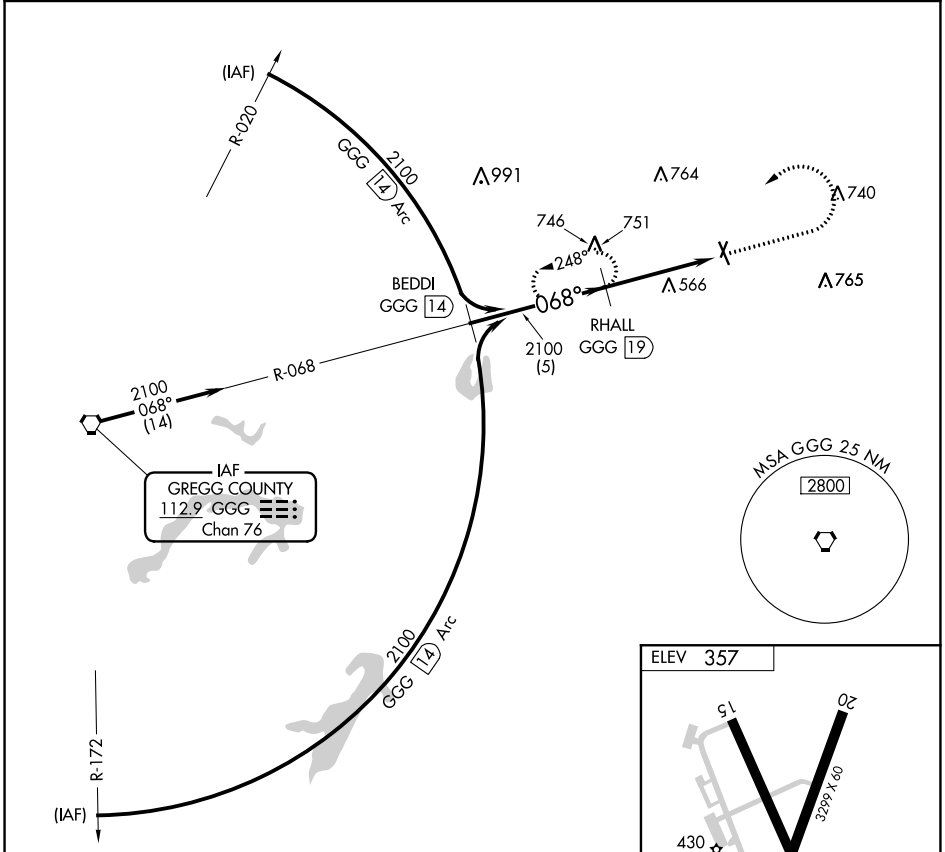
VORTAC GGG 112.9 Chan 76	APP CRS 068°	Rwy Idg TDZE Apt Elev	N/A N/A 357
---------------------------------------	------------------------	-----------------------------	--------------------------

VOR/DME-A
HARRISON COUNTY (ASL)

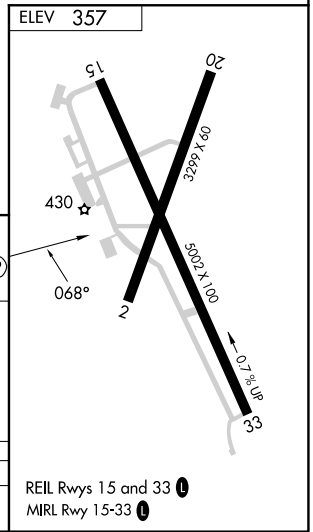
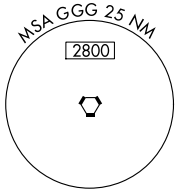
⚠ When local altimeter setting not received, use Longview altimeter setting and increase all MDA 60 feet; increase Cat B visibility to 1½. Night Landing; Rwy 2, 15, 20 NA. Helicopter visibility reduction below 1 SM NA.

⚠ MISSED APPROACH: Climb to 2100 then left turn via GGG R-068 to RHALL/GGG 19 DME and hold.

AWOS-3PT 118.675	SHREVEPORT APP CON 119.9 335.55	UNICOM 122.8 (CTAF) 📻
----------------------------	---	--



IAF
GREGG COUNTY
112.9 GGG **☰☳☲**
Chan 76



	BEDDI GGG 14	RHALL GGG 19	2100	GGG 23.3
Procedure Turn NA	2100 — 068° — 2100			
	5 NM		4.3 NM	
CATEGORY	A		B	C
CIRCLING	1300-1¼		943 (1000-1¼)	NA

SC-2, 11 JUL 2024 to 08 AUG 2024

SC-2, 11 JUL 2024 to 08 AUG 2024