

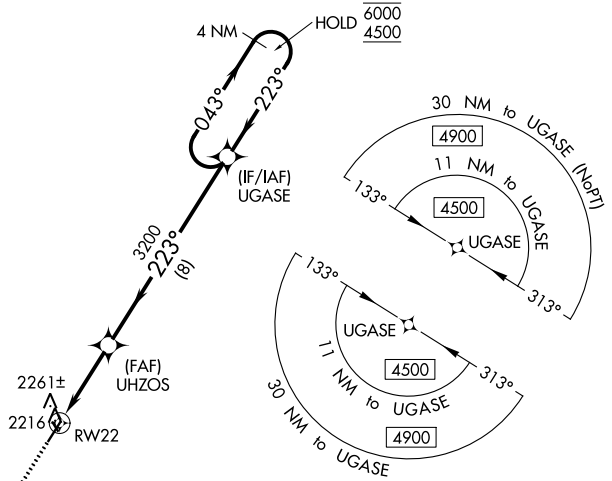
WAAS CH 99401 W22A	APP CRS 223°	Rwy Idg TDZE Apt Elev	4500 2132 2135
--	------------------------	-----------------------------	---

RNAV (GPS) RWY 22

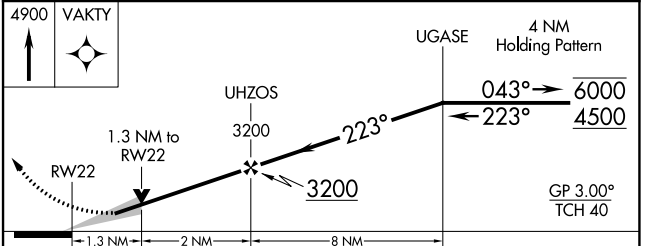
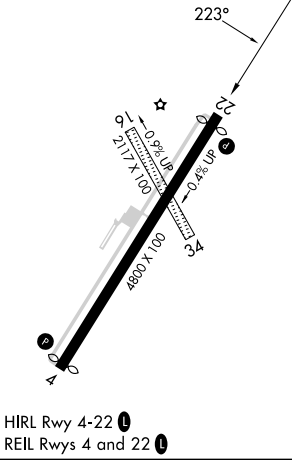
CATTARAUGUS COUNTY-OLEAN (OLE)

RNP APCH-GPS.		MISSED APPROACH: Climb to 4900 direct VAKTY and hold.
<p>▼ Circling NA to Rwys 16 and 34. For uncompensated Baro-VNAV systems, LNAV/VNAV NA below -1°C or above 54°C. When VGSI inop, Straight-in/Circling Rwy 22 procedure NA at night.</p>		
AWOS-3 118.375	CLEVELAND CENTER 124.325 353.85	UNICOM 122.8 (CTAF) ①

2587
A



ELEV 2135	D	TDZE 2132
-----------	----------	-----------



CATEGORY	A	B	C	D
LPV DA		2382-3/4	250 (300-3/4)	
LNAV/VNAV DA		2569-1 1/4	437 (500-1 1/4)	
LNAV MDA	2560-1	428 (500-1)	2560-1 1/4	428 (500-1 1/4)
C CIRCLING	2620-1	485 (500-1)	2680-1 1/2 545 (600-1 1/2)	2720-2 585 (600-2)

NE-2, 11 JUL 2024 to 08 AUG 2024

NE-2, 11 JUL 2024 to 08 AUG 2024