

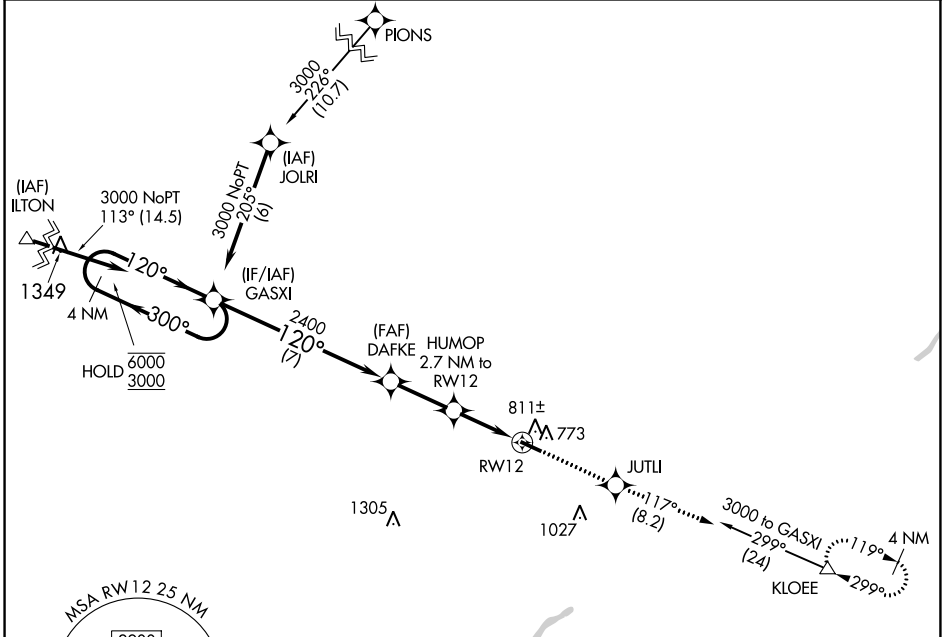
APP CRS	Rwy Idg	4199
120°	TDZE	707
	Apt Elev	707

RNAV (GPS) RWY 12

DEFIANCE MEML (DFI)

RNP APCH.	MISSED APPROACH: Climb to 3000 direct JUTLI and on track 117° to KLOEE and hold.
<p>▼ Circling Rwy 30 NA at night. Rwy 12 helicopter visibility reduction below 3/4 SM NA.</p> <p>▲</p>	

ASOS 121.425	TOLEDO APP CON 134.35 307.0	UNICOM 122.7 (CTAF)
------------------------	---------------------------------------	-------------------------------



EC-2, 11 JUL 2024 to 08 AUG 2024

EC-2, 11 JUL 2024 to 08 AUG 2024

ELEV 707		TDZE 707	
<p>4 NM Holding Pattern</p> <p>GASXI</p> <p>DAFKE</p> <p>HUMOP 2.7 NM to RW12</p> <p>JUTLI tr 117°</p> <p>KLOEE</p> <p>3000</p> <p>6000 ← 300°</p> <p>3000 → 120°</p> <p>2400</p> <p>1600</p> <p>3.00 ≥ TCH 40</p> <p>1.2 NM to RW12</p> <p>7 NM</p> <p>2.5 NM</p> <p>1.5 NM</p> <p>1.2</p>			
CATEGORY	A	B	C
RNAV MDA	1100-1	393 (400-1)	1100-1 1/8 393 (400-1 1/8)
CIRCLING	1140-1 433 (500-1)	1160-1 453 (500-1)	1380-2 673 (700-2) 1380-2 1/4 673 (700-2 1/4)
<p>REIL Rwy 12 and 30</p> <p>MIRL Rwy 12-30</p>			