

WAAS CH 63020 W15A	APP CRS 148°	Rwy Idg TDZE Apt Elev	4107 745 745
--	------------------------	-----------------------------	---

RNAV (GPS) RWY 15L

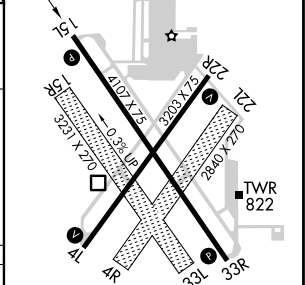
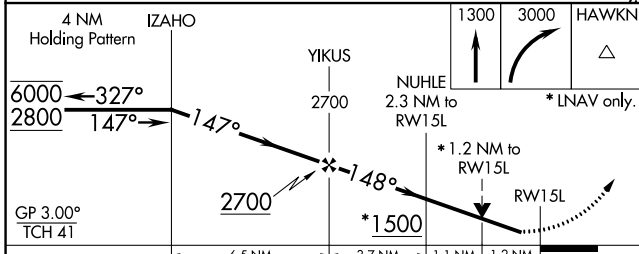
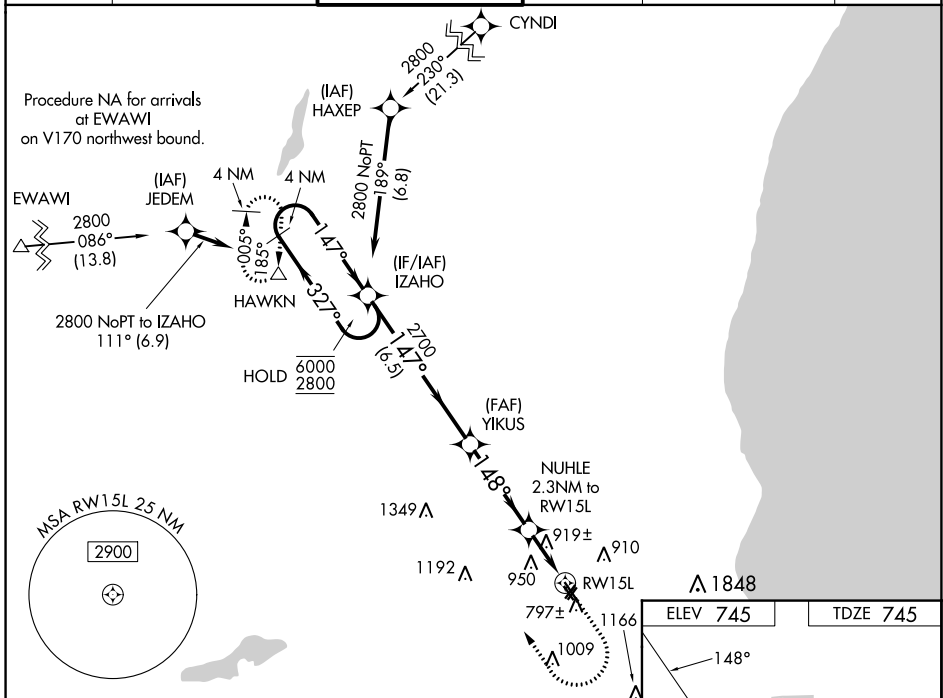
LAWRENCE J TIMMERMAN (MWC)

RNP APCH.

⚠ Circling NA to Rwys 4R, 15R, 22L and 33L. Rwy 15L helicopter visibility reduction below ¼ SM NA. For uncompensated Baro-VNAV systems, LNAV/VNAV NA below -16°C or above 54°C. VDP and Baro-VNAV NA when using General Mitchell Intl altimeter setting. When local altimeter setting not received, use General Mitchell Intl altimeter setting and increase LPV DA to 1024 feet and LNAV/VNAV DA to 1251 feet; increase all MDAs 40 feet and LNAV visibility Cats C and D ½ SM.

MISSED APPROACH:
Climb to 1300 then climbing right turn to 3000 direct HAWKN and hold.

ATIS 128.3	MILWAUKEE APP CON 125.35 307.0	TIMMERMAN TOWER ★ 120.5 (CTAF) 0	GND CON 121.7	CLNC DEL 121.7 (When twr closed)	UNICOM 122.95
----------------------	--	--	-------------------------	--	-------------------------



CATEGORY	A	B	C	D
LPV DA	995-1 250 (300-1)			
LNAV/VNAV DA	1222-1½ 477 (500-1½)			
LNAV MDA	1180-1	435 (500-1)	1180-1¼	435 (500-1¼)
CIRCLING	1220-1 475 (500-1)	1340-1 595 (600-1)	1360-1¾ 615 (700-1¾)	1560-2¾ 815 (900-2¾)

REIL Rwys 4L, 22R, 15L, and 33R
MIRL Rwys 4L-22R and 15L-33R

EC-3, 11 JUL 2024 to 08 AUG 2024

EC-3, 11 JUL 2024 to 08 AUG 2024