

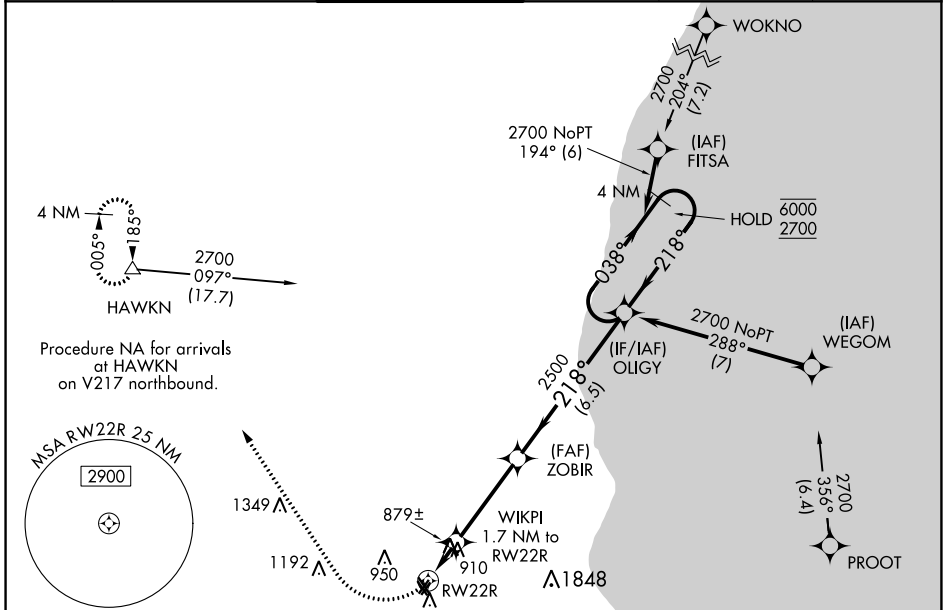
WAAS CH 69524 W22A	APP CRS 218°	Rwy Idg TDZE 739 Apt Elev 745	3203
--	------------------------	---	-------------

RNAV (GPS) RWY 22R

LAWRENCE J TIMMERMAN (MWC)

RNP APCH.		<p>⚠ Circling NA to Rwy's 4R, 15R, 22L, and 33L. Rwy 22R helicopter visibility reduction below ¼ SM NA. When local altimeter setting not received, use General Mitchell Intl altimeter setting and increase all MDAs 40 feet and LP and LNAV visibility Cats C and D ½ SM.</p>		<p>MISSED APPROACH: Climbing right turn to 3000 direct HAWKN and hold.</p>	
-----------	--	--	--	--	--

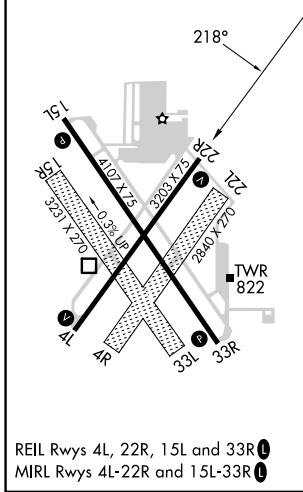
ATIS 128.3	MILWAUKEE APP CON 125.35 307.0	TIMMERMAN TOWER ★ 120.5 (CTAF) 0	GND CON 121.7	CLNC DEL 121.7 (When twr closed)	UNICOM 122.95
----------------------	--	--	-------------------------	---	-------------------------



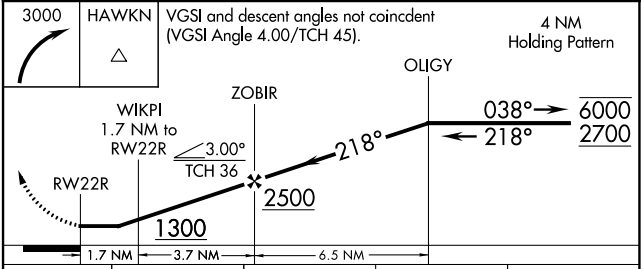
EC-3, 11 JUL 2024 to 08 AUG 2024

EC-3, 11 JUL 2024 to 08 AUG 2024

ELEV 745	TDZE 739
----------	----------



3000	HAWKN	VGSI and descent angles not coincident (VGSI Angle 4.00/TCH 45).	4 NM Holding Pattern
------	-------	--	----------------------



CATEGORY	A	B	C	D
LP MDA	1160-1	421 (500-1)	1160-1¼	421 (500-1¼)
LNAV MDA	1160-1	421 (500-1)	1160-1¼	421 (500-1¼)
CIRCLING	1220-1 475 (500-1)	1340-1 595 (600-1)	1360-1¾ 615 (700-1¾)	1560-2¾ 815 (900-2¾)