

MERIDIAN, MISSISSIPPI

HI-ILS Z or LOC/DME Z RWY 19L

LOC I-NMM 109.7	APCH CRS 191°	Rwy ldg TDZE Arpt Elev 8000 316 316
---------------------------	-------------------------	---

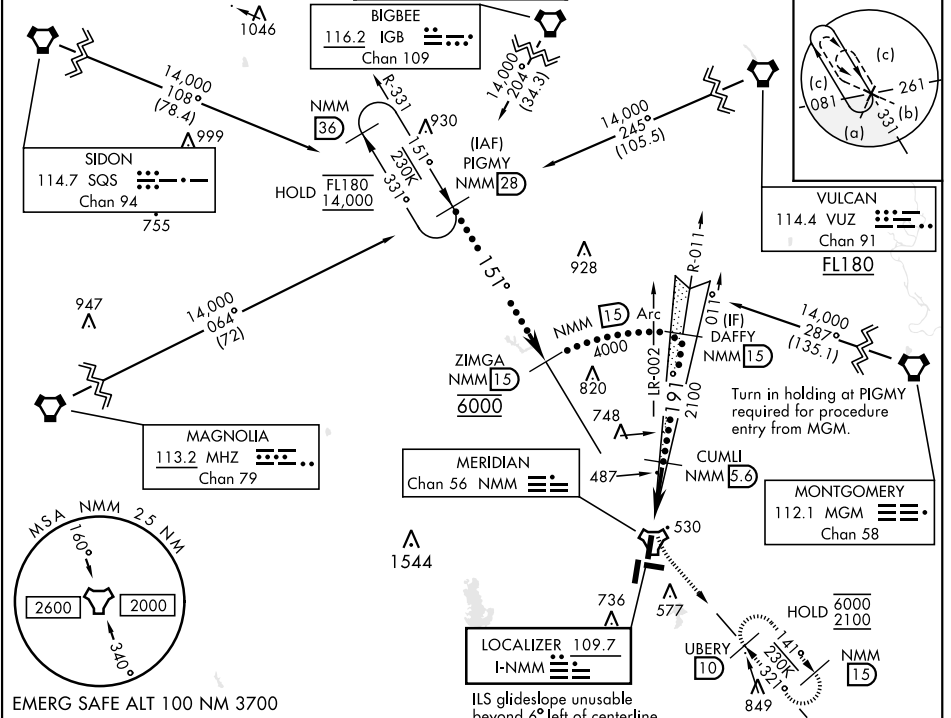
AL-5079 [USN]

MERIDIAN NAS (MC CAIN FIELD) (KNMM)

MALS R

MISSED APPROACH: Climb to 800 then climbing left turn to 2100 intercept NMM R-141 to UBERY and hold.

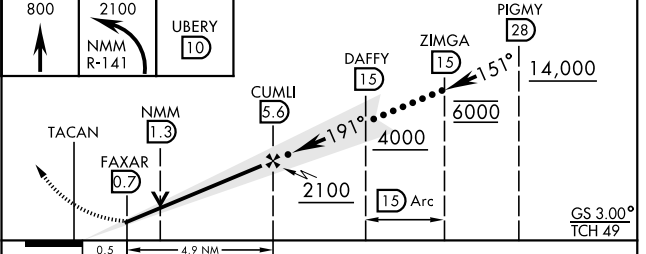
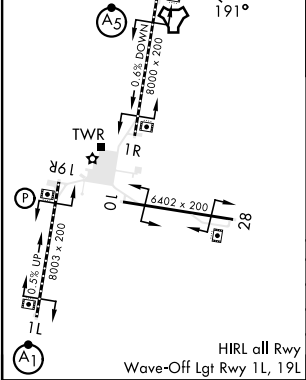
ATIS ★ 290.525	APP CON 120.95 276.4	NAVY MC CAIN TOWER ★ 126.2 340.2	GND CON 336.4	CLNC DEL 301.0	ASR/ PAR
--------------------------	--------------------------------	--	-------------------------	--------------------------	-------------



SC-4, 11 JUL 2024 to 08 AUG 2024

SC-4, 11 JUL 2024 to 08 AUG 2024

ELEV 316	TDZE 316
----------	----------



CATEGORY	C	D	E
S-ILS 19L *	516-1/2	200	(200-1/2)
S-LOC 19L**	740-3/4	424	(500-3/4)
CIRCLING	840-1 1/2 524 (600-1 1/2)	880-2 564 (600-2)	1080-2 3/4 764 (800-2 3/4)

MERIDIAN, MISSISSIPPI

32° 33' N - 88° 33' W

MERIDIAN NAS (MC CAIN FIELD) (KNMM)

Orig 03NOV22

HI-ILS Z or LOC/DME Z RWY 19L