

TACAN NMM Chan 56	APCH CRS 181°	Rwy ldg TDZE Arprt Elev 8000 316 316
-----------------------------	-------------------------	--

AL-5079 [USN]

MERIDIAN NAS (MC CAIN FIELD) (KNMM)

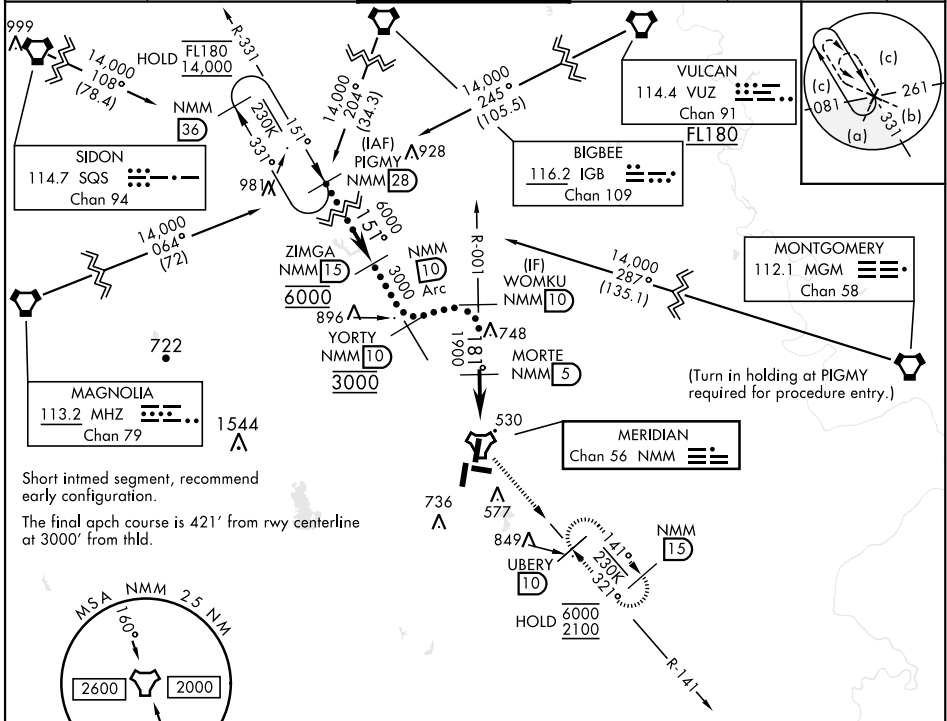
DME required.

MALSR

MISSED APPROACH: Climb to 2100 via NMM R-001 to TACAN then via R-141 to UBERY and hold.

▼ * When ALS inop, increase vis to 1 3/8 miles.

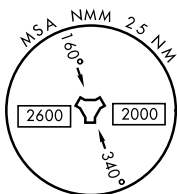
ATIS ★ 290.525	APP CON 120.95 276.4	NAVY MC CAIN TOWER ★ 126.2 340.2	GND CON 336.4	CLNC DEL 301.0	ASR/ PAR
--------------------------	--------------------------------	--	-------------------------	--------------------------	-------------



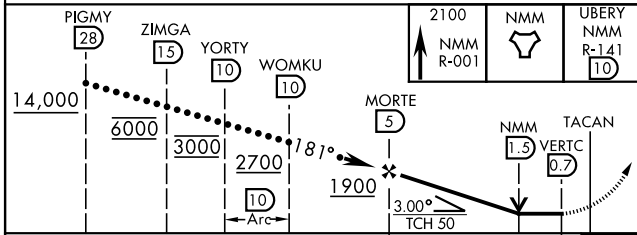
SC-4, 11 JUL 2024 to 08 AUG 2024

SC-4, 11 JUL 2024 to 08 AUG 2024

Short inmed segment, recommend early configuration.
The final apch course is 421' from rwy centerline at 3000' from hld.



EMERG SAFE ALT 100 NM 3700



CATEGORY	C	D	E
S-19L *	780-1	464	(500-1)
CIRCLING	840-1 1/2 524 (600-1 1/2)	880-2 564 (600-2)	1080-2 3/4 764 (800-2 3/4)

