

MERIDIAN, MISSISSIPPI

RNAV (GPS) RWY 19L

| | | |
|----------|------------|------|
| APCH CRS | Rwy Idg | 8000 |
| 191° | TDZE | 316 |
| | Arprt Elev | 316 |

AL-5079 (USN)

MERIDIAN NAS (MC CAIN FLD) (KNMM)

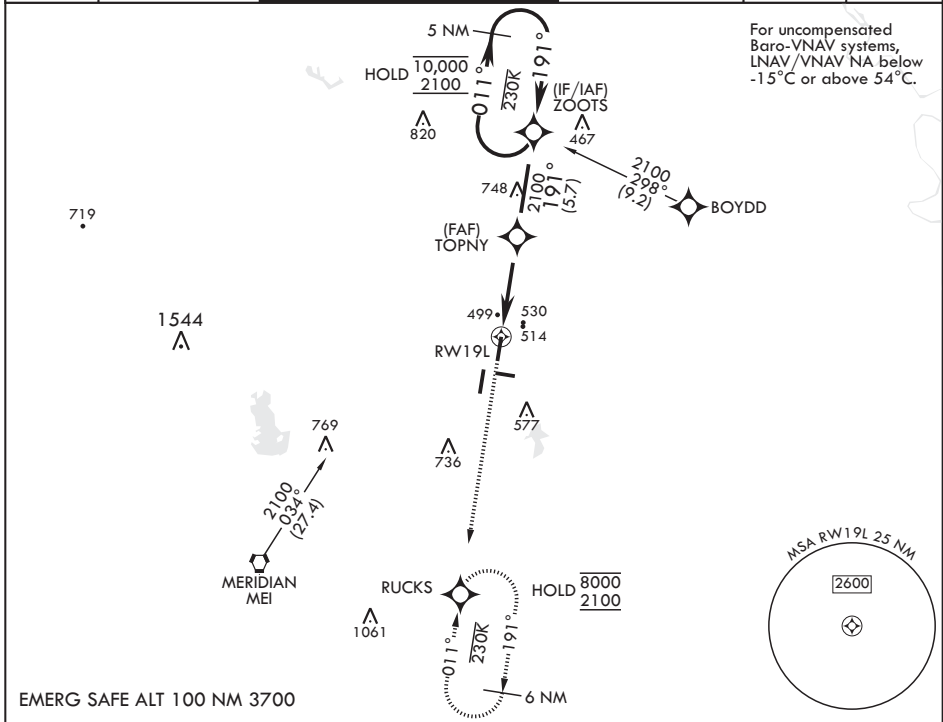
RNP APCH.

▼ * When ALS inop, increase CAT AB vis to 1 mile, increase CAT CDE to 1 3/8 miles.
 ** When ALS inop, increase vis to 1 3/8 miles.

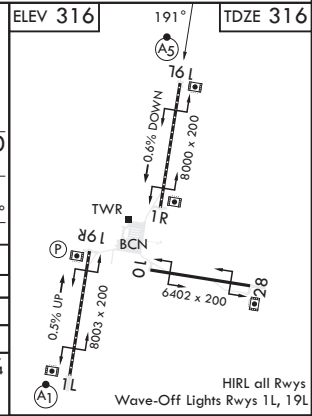
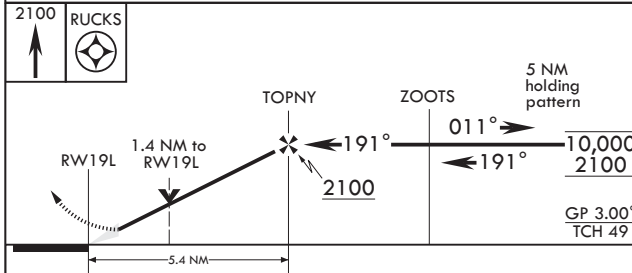


MISSED APPROACH: Climb to 2100 direct RUCKS and hold.

| | | | | | |
|------------------|--|--|--------------------------|-------------------|---------|
| ATIS★ 290.525 | APP CON 120.5 269.325 S 379.275 N 120.95 276.4 W 121.275 348.7 E | MC CAIN TOWER★ 126.2 340.2 RWY 01L, 19L AND 28 126.2 360.2 RWY 01R, 19R AND 10 | MC CAIN GND CON 336.4 | CLNC DEL 301.0 | ASR/PAR |
|------------------|--|--|--------------------------|-------------------|---------|



For uncompensated Baro-VNAV systems, LNAV/VNAV NA below -15°C or above 54°C.



| CATEGORY | A | B | C | D | E |
|----------------|-------------------------|-------------------------|---------------------------|-------------------------|----------------------------|
| LNAV/VNAV DA** | 800-1 | | 484 | (500-1) | |
| LNAV MDA* | 800-½ | 484 (500-½) | 800-1 | 484 | (500-1) |
| CIRCLING | 820-1 504 (600-1) | 840-1 524 (600-1) | 840-1½ 524 (600-1½) | 880-2 564 (600-2) | 1080-2¾ 764 (800-2¾) |

MERIDIAN, MISSISSIPPI

32°33'N - 88°33'W

MERIDIAN NAS (MC CAIN FLD) (KNMM)

Amdt 4 08SEP22

RNAV (GPS) RWY 19L

SC-4, 11 JUL 2024 to 08 AUG 2024

SC-4, 11 JUL 2024 to 08 AUG 2024