

APP CRS	Rwy Idg	<b>4001</b>
<b>104°</b>	TDZE	<b>1057</b>
	Apt Elev	<b>1072</b>

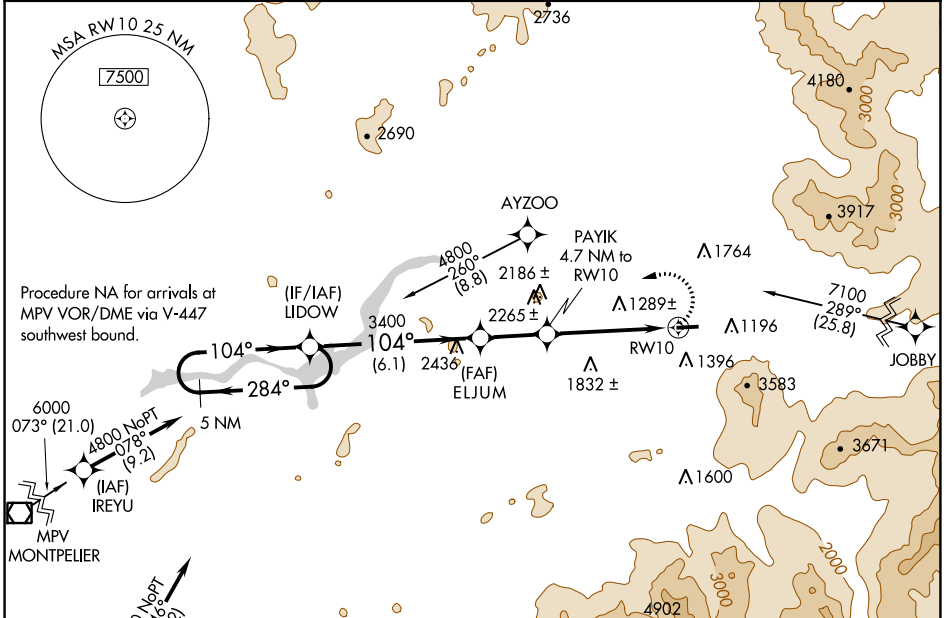
# RNAV (GPS) Y RWY 10

MOUNT WASHINGTON RGNL (HIE)

**⚠** Circling NA south of Rwy 10-28. DME/DME RNP-0.3 NA. Visibility reduction by helicopters NA. When local altimeter setting not received, use Lyndonville altimeter setting and increase all MDA 80 feet; increase LNAV and Circling Cat B/C visibilities ¼ mile. VDP NA with Lyndonville altimeter setting. Circling to Rwy 28 NA at night.

**⚠** MISSED APPROACH: Climbing left turn to 4800 direct LIDOW and hold.

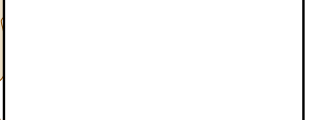
ASOS <b>118.525</b>	BOSTON CENTER <b>135.7 282.2</b>	UNICOM <b>122.8 (CTAF) 0</b>
------------------------	-------------------------------------	---------------------------------



NE-1, 11 JUL 2024 to 08 AUG 2024

NE-1, 11 JUL 2024 to 08 AUG 2024

ELEV 1072	TDZE 1057
-----------	-----------



5 NM Holding Pattern				LIDOW		ELJUM		PAYIK		RW10	
4800 ← 284°		→ 104°		→ 104°		→ 3.06° TCH 45		→ 2.3 NM to RW10		→ 2.3	
				3400		2600					
				6.1 NM		2.4 NM		2.4 NM		2.3	

CATEGORY	A	B	C	D
LNAV MDA	1940-1¼	883 (900-1¼)	1940-2¾	883 (900-2¾)
CIRCLING	1940-1¼	868 (900-1¼)	1980-2¾	908 (1000-2¾)

REIL Rwy 10 and 28 0

MIRL Rwy 10-28 0