

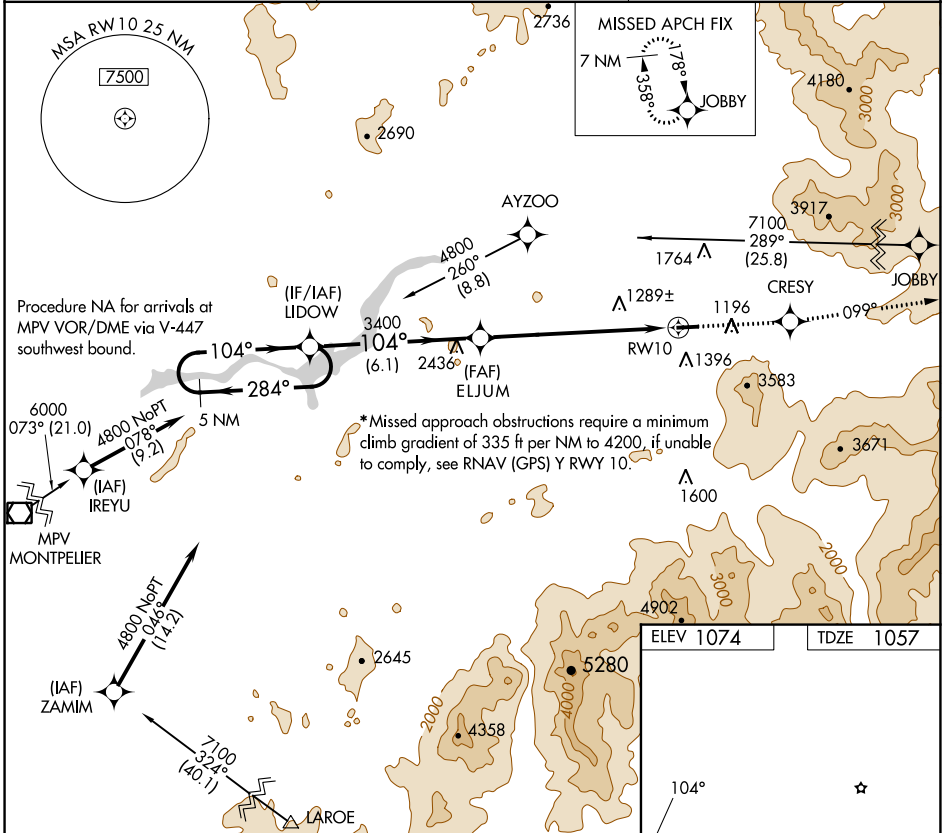
WAAS CH 53512 W10A	APP CRS 104°	Rwy Idg TDZE Apt Elev 4001 1057 1074
--	------------------------	--

RNAV (GPS) Z RWY 10

MOUNT WASHINGTON RGNL (HIE)

<p>⚠ DME/DME RNP-0.3 NA. Visibility reduction by helicopters NA. When local altimeter setting not received, use Lyndonville altimeter setting and increase DA 71 feet and LPV all Cals visibility ½ mile.</p> <p>❄ -29°C</p>	<p>⚠ MISSED APPROACH: Climb to 7100 direct CRESY and via track 099° to JOBBY and hold, continue climb-in-hold to 7100.</p>
--	---

ASOS 118.525	BOSTON CENTER 135.7 282.2	UNICOM 122.8 (CTAF) ①
------------------------	-------------------------------------	---------------------------------



NE-1, 11 JUL 2024 to 08 AUG 2024

NE-1, 11 JUL 2024 to 08 AUG 2024

<p>VGSi and RNAV glidepath not coincident (VGSi Angle 3.50/TCH 45).</p> <p>5 NM Holding Pattern LIDOW</p> <p>4800 ← 284° → 104° → 104° → 3400</p> <p>GP 3.00° TCH 45</p> <p>6.1 NM 7.1 NM</p>	<p>7100 CRESY</p> <p>↑</p>	<p>JOBBY</p> <p>↑</p>	<p>0.6% UP →</p> <p>4001 X 75</p>	
	<p>ELJUM</p> <p>3400</p> <p>RW10</p>	<p>↑</p>	<p>↑</p>	<p>↑</p>
CATEGORY	A	B	C	D
*LPV DA	1507-1½ 450 (500-1½)			NA

REIL Rwy 10 and 28 ①
MIRL Rwy 10-28 ①