

LOC I-RHI 111.3	APP CRS 091°	Rwy Idg 6799
		TDZE 1623
		Apt Elev 1623

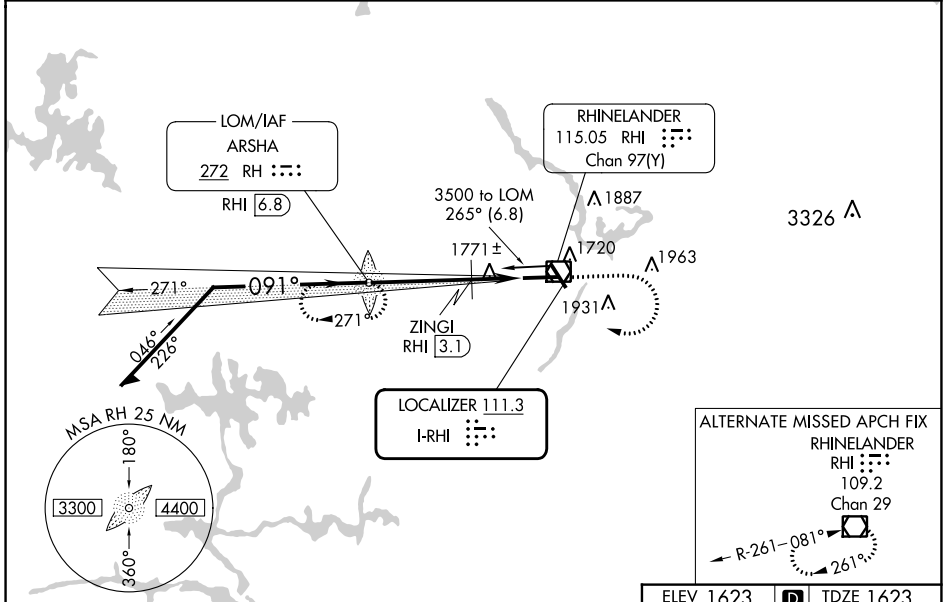
ILS or LOC RWY 9
RHINELANDER/ONEIDA COUNTY (RHI)

ADF or DME required.

MAISR
 MISSED APPROACH:
 Climb to 2100 then climbing right turn to 3500 direct ARSHA LOM/RHI VOR/DME 6.8 DME and hold, continue climb-in-hold to 3500.

NA ** DME from RHI VOR/DME.

ASOS 126.825	MINNEAPOLIS CENTER 133.65 281.5	UNICOM 123.0 (CTAF)
------------------------	---	-------------------------------



*2240 when using Tomahawk altimeter setting. Remain within 10 NM

RH LOM RHI **6.8**

3500 → 271° → 3477

3500 → 091° → 3500

ZINGI RHI **3.1**

*2180

3.7 NM 1.9 NM

GS 3.00° TCH 52

ELEV 1623	D	TDZE 1623
-----------	----------	-----------

CATEGORY	A	B	C	D
S-ILS 9	1823-½ 200 (200-½)			
S-LOC 9	2180-½	557 (600-½)	2180-1⅛	557 (600-1⅛)
C CIRCLING	2180-1 557 (600-1)	2260-1 637 (700-1)	2260-1¾ 637 (700-1¾)	2280-2 657 (700-2)
ZINGI FIX MINIMUMS**				
S-LOC 9	2040-½	417 (500-½)	2040-¾	417 (500-¾)
C CIRCLING	2100-1 477 (500-1)	2260-1 637 (700-1)	2260-1¾ 637 (700-1¾)	2280-2 657 (700-2)

Diagram showing secondary approach details:
 - Altitudes: 2100, 3500, RH.
 - Angle: 091°.
 - Distance: 6800 X 150.
 - Gradient: -0.4% UP.
 - Other altitudes: 1659, 1620, 1623, 1625, 1627, 1629, 1631, 1633.

EC-3, 11 JUL 2024 to 08 AUG 2024

EC-3, 11 JUL 2024 to 08 AUG 2024

HIRL Rwys 9-27 and 15-33	1
REIL Rwys 15, 27 and 33	1
FAF to MAP 5.6 NM	
Knots	60 90 120 150 180
Min:Sec	5:36 3:44 2:48 2:14 1:52