

APP CRS	Rwy Idg	5201
150°	TDZE	1600
	Apt Elev	1623

RNAV (GPS) RWY 15

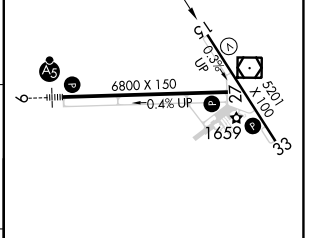
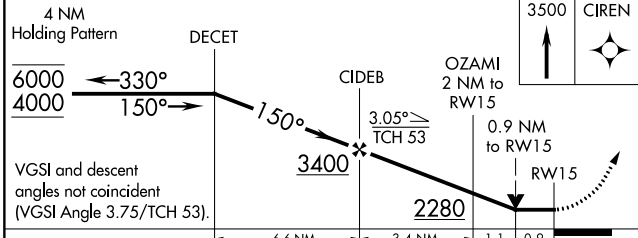
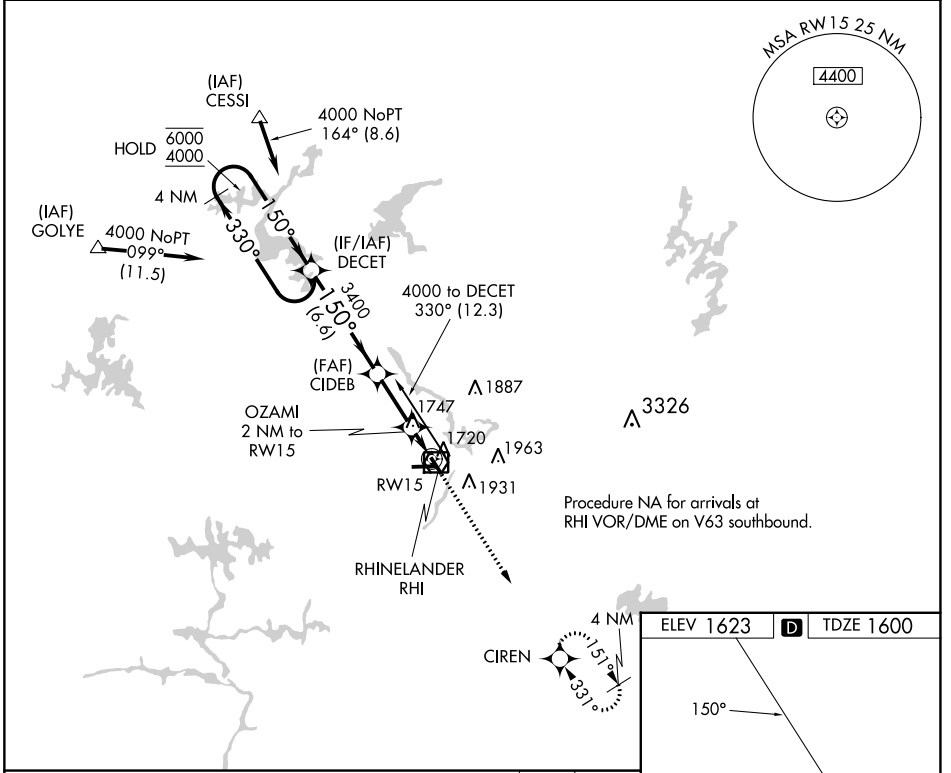
RHINELANDER/ONEIDA COUNTY (RHI)

RNP APCH - GPS.

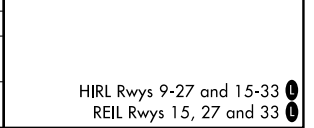
⚠ Rwy 15 helicopter visibility reduction below 3/4 SM NA.

MISSED APPROACH:
Climb to 3500 direct CIREN and hold.

ASOS 126.825	MINNEAPOLIS CENTER 133.65 281.5	UNICOM 123.0 (CTAF)
-------------------------------	--	--------------------------------------



CATEGORY	A	B	C	D
LNVA MDA	2000-1	400 (400-1)	2000-1 1/8	400 (400-1 1/8)
C CIRCLING	2100-1 477 (500-1)	2260-1 637 (700-1)	2260-1 3/4 637 (700-1 3/4)	2280-2 657 (700-2)



EC-3, 11 JUL 2024 to 08 AUG 2024

EC-3, 11 JUL 2024 to 08 AUG 2024