

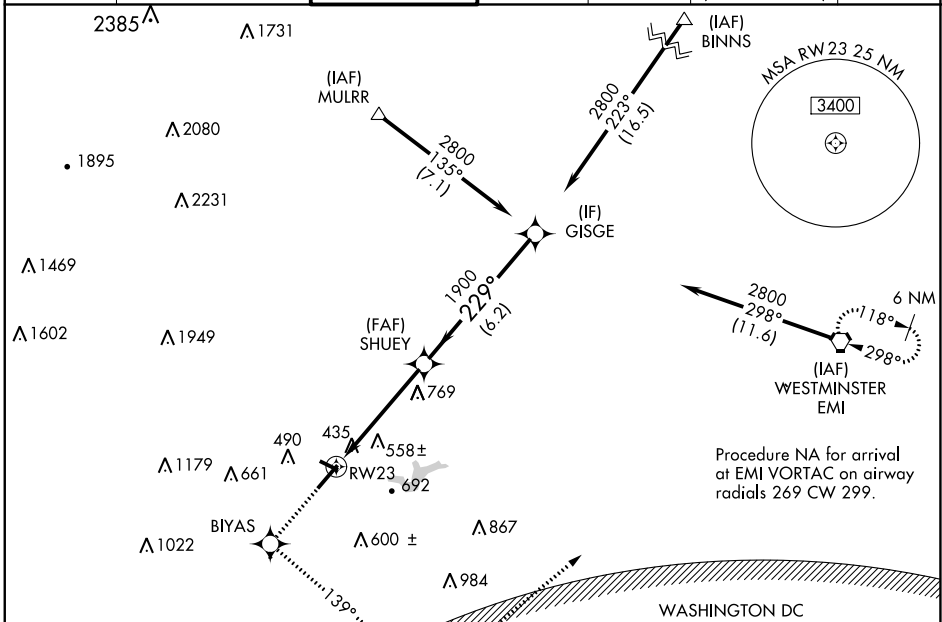
WAAS CH <b>81802</b> <b>W23A</b>	APP CRS <b>229°</b>	Rwy Idg TDZE <b>296</b> Apt Elev <b>306</b>	<b>5819</b>
--	------------------------	---	-------------

# RNAV (GPS) Z RWY 23

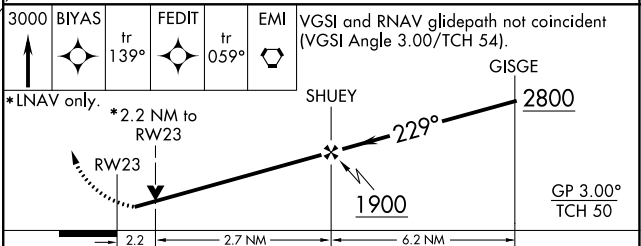
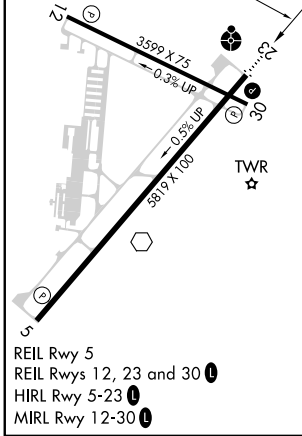
FREDERICK MUNI (FDK)

RNP APCH.	<p><b>⚠</b> Rwy 23 helicopter visibility reduction below 3/4 SM NA. Circling Rwy 30 NA at night. For uncompensated Baro-VNAV systems, LNAV/VNAV NA below -15°C or above 54°C. Inop table does not apply to LPV, LNAV/VNAV all Cats, and LNAV Cat C.</p>	ODALS 	MISSED APPROACH: Climb to 3000 direct BIYAS WP and via 139° track to FEDIT WP and via 059° track to EMI VORTAC and hold.
-----------	---	-----------	--

ATIS <b>124.875</b>	POTOMAC APP CON <b>126.1 338.25</b>	FREDERICK TOWER ★ <b>132.4</b> (CTAF) <b>0</b>	GND CON <b>127.425</b>	CLNC DEL <b>127.425</b>	CLNC DEL <b>126.9</b> (When twr closed)	UNICOM <b>122.95</b>
------------------------	--	---	---------------------------	----------------------------	---	-------------------------



ELEV 306	TDZE 296
----------	----------



↑	3000 BIYAS	FEDIT	EMI	VGSI and RNAV glidepath not coincident (VGSI Angle 3.00/TCH 54).
	tr 139°	tr 059°		
	*LNAV only.	*2.2 NM to RWY23	SHUEY	GISGE
			1900	2800
				GP 3.00° TCH 50
CATEGORY	A	B	C	D
LPV DA	690-1½ 394 (400-1½)			
LNAV/VNAV DA	1020-2½ 724 (800-2½)			
LNAV MDA	1020-¾ 724 (800-¾)	1020-2 724 (800-2)	1020-2¼ 724 (800-2¼)	1020-2½ 724 (800-2½)
<input checked="" type="checkbox"/> CIRCLING	1020-1 714 (800-1)	1100-2¼ 794 (800-2¼)	1200-2¾ 894 (900-2¾)	

NE-3, 11 JUL 2024 to 08 AUG 2024

NE-3, 11 JUL 2024 to 08 AUG 2024