

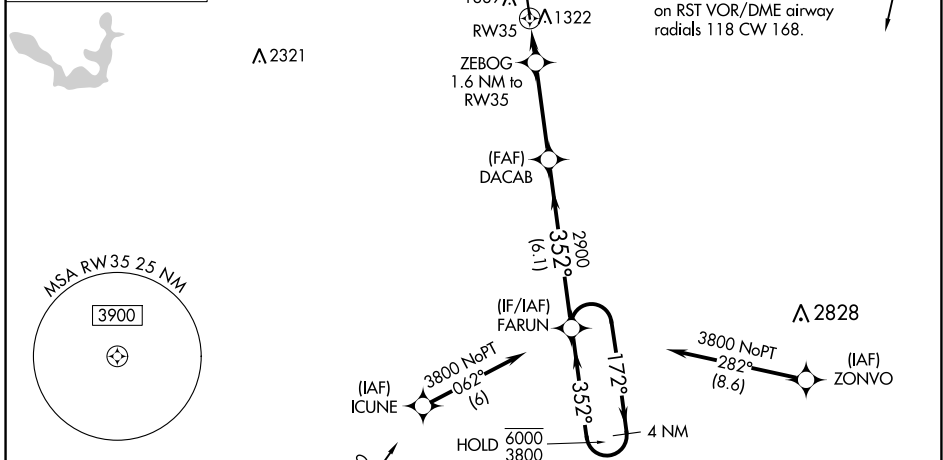
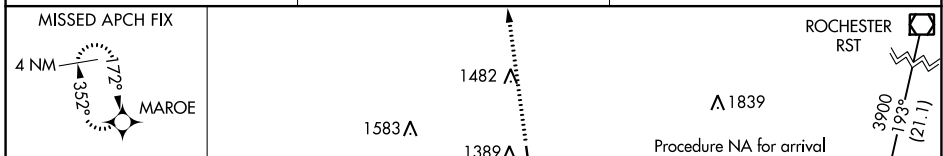
WAAS CH 99506 W35A	APP CRS 352°	Rwy Idg TDZE Apt Elev	5800 1231 1234
--	------------------------	-----------------------------	---

RNAV (GPS) RWY 35

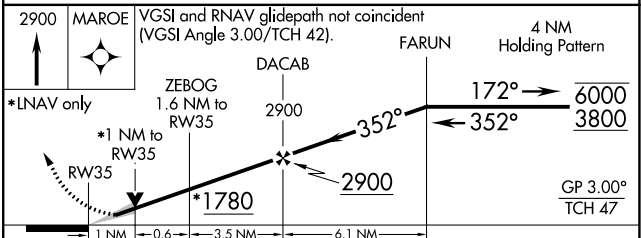
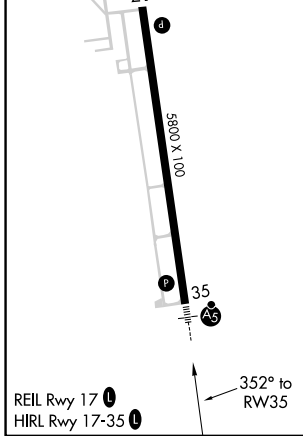
AUSTIN MUNI (AUM)

RNP APCH. ▼ For uncompensated Baro-VNAV systems, LNAV/VNAV NA below -17°C or above 54°C. For inop ALS increase LNAV/VNAV all Cats visibility to ¾ SM and LNAV Cats C/D visibility to 1 SM.	MALSR 	MISSED APPROACH: Climb to 2900 direct MAROE and hold.
---	-----------	---

AWOS-3 119.025	ROCHESTER APP CON * 119.8 251.125	UNICOM 122.7 (CTAF)
--------------------------	---	-------------------------------



ELEV 1234	TDZE 1231
-----------	-----------



CATEGORY	A	B	C	D
LPV DA		1431-½	200 (200-½)	
LNAV/VNAV DA		1483-½	252 (300-½)	
LNAV MDA	1580-½	349 (400-½)	1580-⅝	349 (400-⅝)
<input checked="" type="checkbox"/> CIRCLING	1700-1	466 (500-1)	1800-1½	1880-2 646 (700-2)

NC-1, 11 JUL 2024 to 08 AUG 2024

NC-1, 11 JUL 2024 to 08 AUG 2024