

VOR TBN 110.0	APP CRS 329°	Rwy Idg TDZE Apt Elev	5510 1153 1160
-------------------------	------------------------	-----------------------------	---

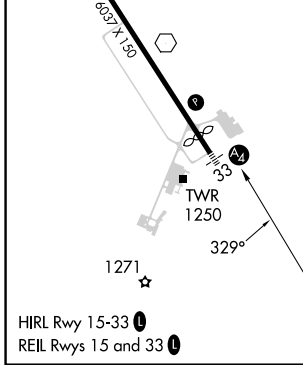
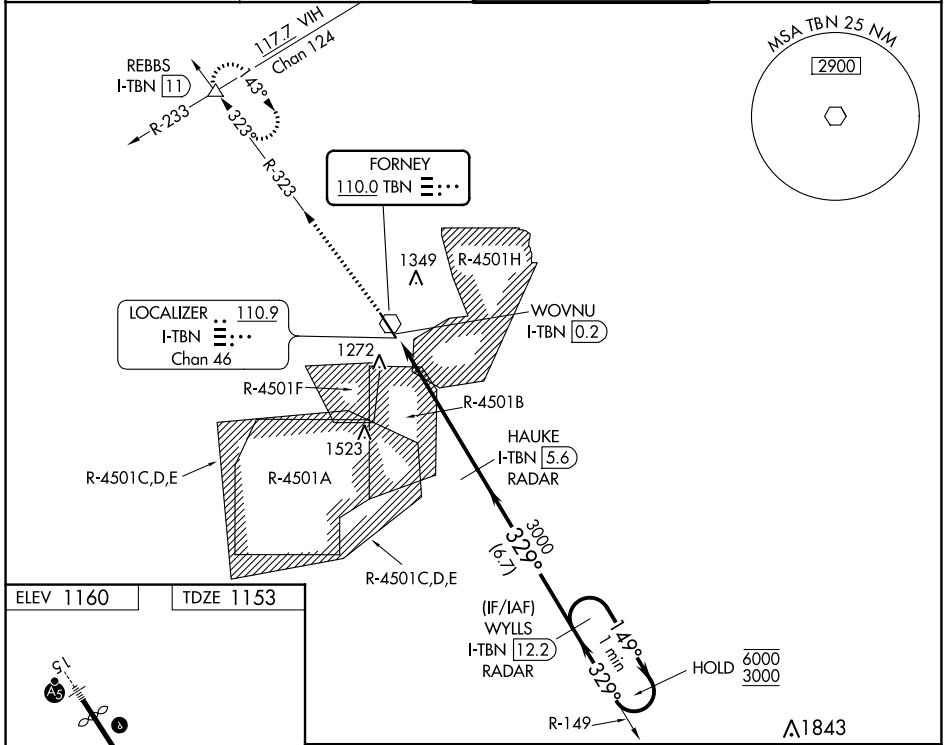
VOR RWY 33

WAYNESVILLE-ST ROBERT RGNL FORNEY FLD (TBN)

DME or RADAR required. RADAR required for procedure entry.

<p>⚠ When local altimeter not received, use Rolla Ntl altimeter setting and increase all MDAs 80 feet. Increase S-33 Cats C/D visibility to 1¼ SM. Procedure NA when R-4501B or R-4501H in use. Circling NA west of Rwy 15-33. Rwy 33 helicopter visibility reduction below ¾ SM NA. Inop table does not apply to Cats A and B. For inop ALS, increase Cats C and D visibility to 1¾ SM. Inop table does not apply to Cats A and B when using Rolla Ntl altimeter setting.</p>	<p>MALS</p>	<p>MISSED APPROACH: Climb to 3000 on TBN VOR R-323 to REBBS INT/I-TBN LOC/DME 11 DME and hold.</p>
	<p>When local altimeter not received, use Rolla Ntl altimeter setting and increase all MDAs 80 feet. Increase S-33 Cats C/D visibility to 1¼ SM. Procedure NA when R-4501B or R-4501H in use. Circling NA west of Rwy 15-33. Rwy 33 helicopter visibility reduction below ¾ SM NA. Inop table does not apply to Cats A and B. For inop ALS, increase Cats C and D visibility to 1¾ SM. Inop table does not apply to Cats A and B when using Rolla Ntl altimeter setting.</p>	

D-ATIS 118.7 229.4	KANSAS CITY CENTER 128.35 284.675	FORNEY TOWER ★ 125.4 (CTAF) 0 268.7	GND CON 123.75 256.8
------------------------------	---	---	--------------------------------



<p>3000 REBBS TBN R-323</p>	<p>HAUKE I-TBN 5.6 RADAR</p>	<p>WYLLS I-TBN 12.2 RADAR</p>	<p>One Minute Holding Pattern</p>	
			<p>6000 3000</p>	<p>6000 3000</p>
<p>I-TBN DME ANTENNA</p>		<p>WOVNU I-TBN 0.2</p>		<p>I-TBN 1.2</p>
<p>1.3 NM</p>		<p>4.4 NM</p>		<p>6.7 NM</p>
<p>3000</p>	<p>3000</p>	<p>329°</p>	<p>149°</p>	<p>6000 3000</p>
<p>3.00° TCH 36</p>		<p>329°</p>		
<p>CATEGORY</p>	<p>A</p>	<p>B</p>	<p>C</p>	<p>D</p>
<p>S-33</p>	<p>1600-1 447 (500-1)</p>			
<p>C CIRCLING</p>	<p>1600-1 440 (500-1)</p>	<p>1660-1 500 (500-1)</p>	<p>1660-1½ 500 (500-1½)</p>	<p>1720-2 560 (600-2)</p>

VOR RWY 33

NC-3, 11 JUL 2024 to 08 AUG 2024

NC-3, 11 JUL 2024 to 08 AUG 2024