


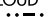
(RST1.RST) 23334

ROCHESTER ONE DEPARTURE

AL-5094 (FAA)


FLYING CLOUD (FCM)
MINNEAPOLIS, MINNESOTA




FLYING CLOUD
117.Z FCM 
Chan 124

TOP ALTITUDE:
**(JETS) 7000/
(PROPS) 5000**

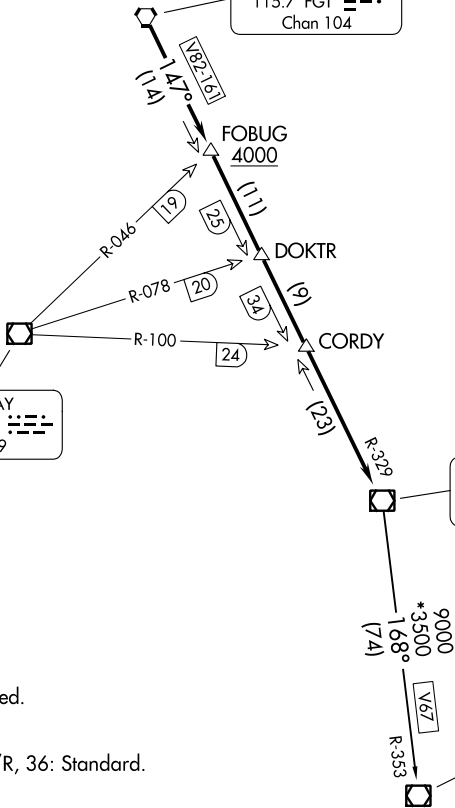
MINNEAPOLIS DEP CON
134.7 284.7
ATIS
124.9
MINNEAPOLIS CLNC DEL
121.7 (when tower closed)
FLYING CLOUD TOWER ★
119.15

FARMINGTON
115.7 FGT 
Chan 104

HALFWAY
111.2 FOW 
Chan 49

ROCHESTER
112.0 RST 
Chan 57

WATERLOO
112.2 ALO 
Chan 59



NC-1, 11 JUL 2024 to 08 AUG 2024

NC-1, 11 JUL 2024 to 08 AUG 2024

NOTE: RADAR required.

TAKEOFF MINIMUMS

Rwys 10L/R, 18, 28L/R, 36: Standard.

NOTE: Chart not to scale.



DEPARTURE ROUTE DESCRIPTION

TAKEOFF ALL RUNWAYS: Fly assigned heading and altitude for RADAR vectors to FGT VORTAC then on FGT R-147 and RST R-329 to RST VOR/DME. Cross FOBUG INT/FGT 14 DME at or above 4000, thence

. . . .on assigned transition or assigned route. Expect clearance to filed altitude/flight level 10 (ten) minutes after departure.

WATERLOO TRANSITION (RST1.ALO): From over RST VOR/DME on RST R-168 and ALO R-353 to ALO VOR/DME.

ROCHESTER ONE DEPARTURE

(RST1.RST) 13SEP18

MINNEAPOLIS, MINNESOTA
FLYING CLOUD (FCM)