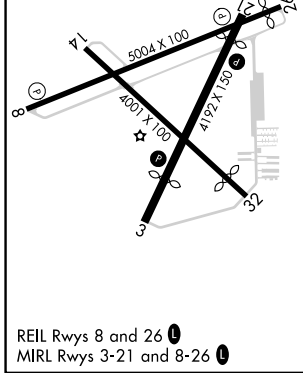
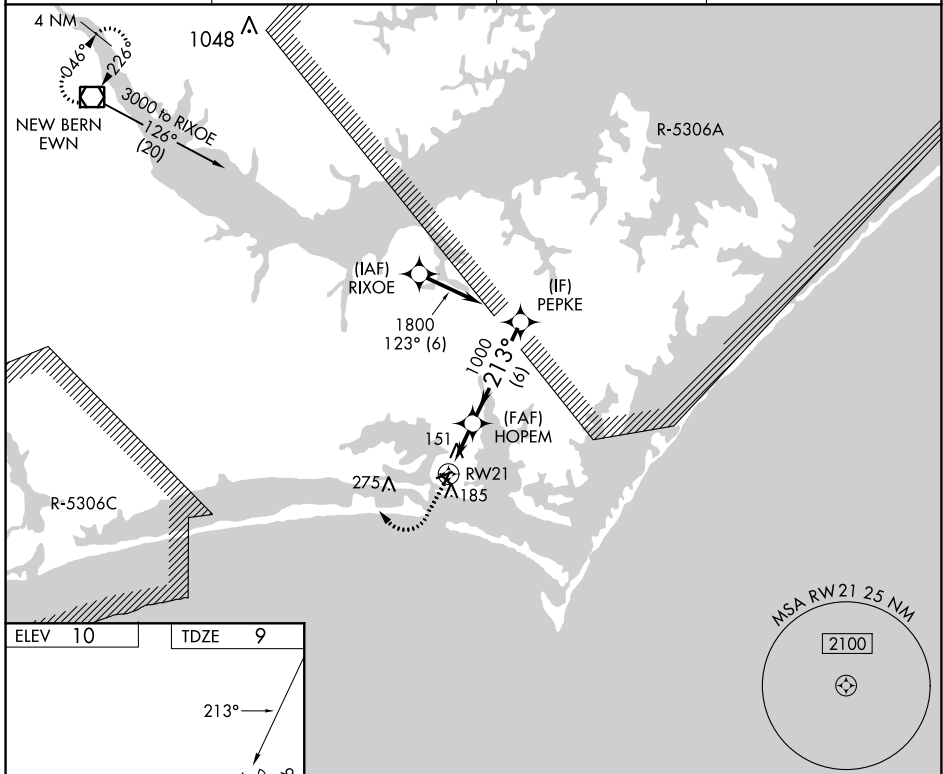


APP CRS <b>213°</b>	Rwy Idg <b>3676</b>
	TDZE <b>9</b>
	Apt Elev <b>10</b>

# RNAV (GPS) RWY 21

MICHAEL J SMITH FLD (MR.H)

RNP APCH - GPS.			MISSED APPROACH: Climb to 500 then climbing right turn to 3000 direct EWN VOR/DME and hold.
ASOS <b>135.375</b>	CHERRY POINT APP CON <b>132.575 299.6</b>	CLNC DEL <b>125.65</b>	UNICOM <b>122.8 (CTAF) 0</b>



ELEV 10	TDZE 9	500		3000	EWN	VGSI and descent angles not coincident (VGSI Angle 4.00/TCH 54).	
		HOPEM		PEPKE		1800	
RW21		0.8		2.2 NM		6 NM	
CATEGORY	A	B	C	D			
LNAV MDA	420-1	411 (500-1)	NA				
CIRCLING	540-1	530 (600-1)	NA				

SE-2, 11 JUL 2024 to 08 AUG 2024

SE-2, 11 JUL 2024 to 08 AUG 2024