

APP CRS	Rwy Idg	<b>3328</b>
<b>033°</b>	TDZE	<b>9</b>
	Apt Elev	<b>10</b>

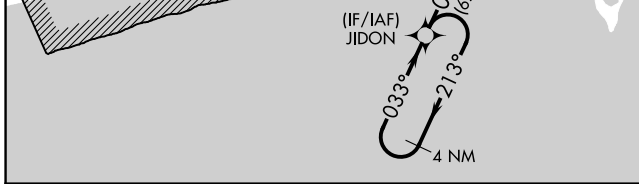
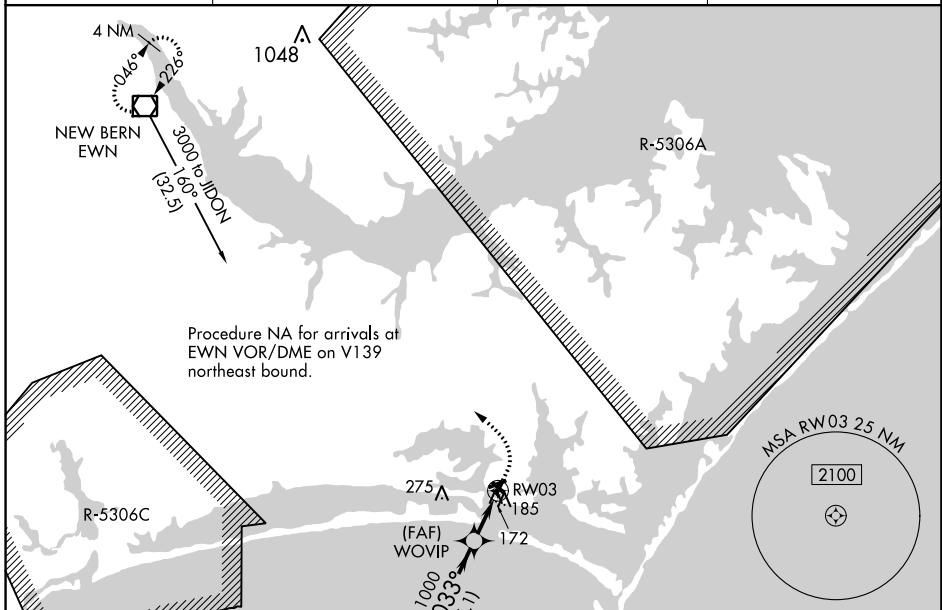
# RNAV (GPS) RWY 3

MICHAEL J SMITH FLD (MR.H)

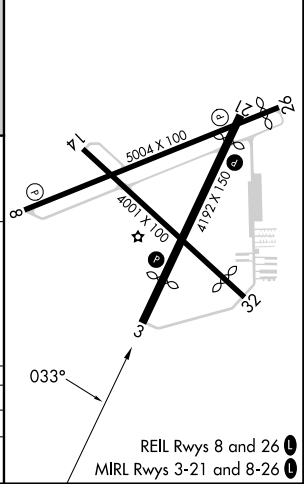
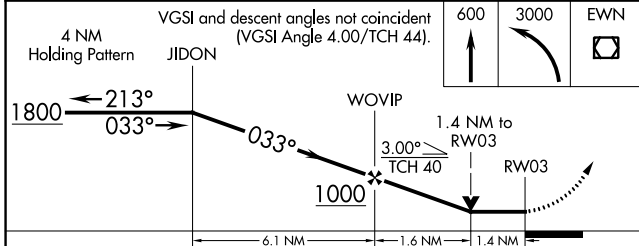
**⚠** Circling Rwy 8, 14, 32 NA at night. DME/DME RNP-0.3 NA. ATC clearance required to penetrate R-5306A and R-5306C. When local altimeter setting not received, use Cherry Point MCAS (Cunningham Fld) altimeter setting and increase all MDA 40 feet. Rwy 3 helicopter visibility reduction below 3/4 SM NA. VDP NA when using Cherry Point MCAS (Cunningham Fld) altimeter setting. Rwy 8, 14, 32 helicopter visibility reduction below 1 SM NA.

**MISSED APPROACH:** Climb to 600 then climbing left turn to 3000 direct EWN VOR/DME and hold.

ASOS <b>135.375</b>	CHERRY POINT APP CON <b>132.575 299.6</b>	CLNC DEL <b>125.65</b>	UNICOM <b>122.8 (CTAF) 0</b>
------------------------	--	---------------------------	---------------------------------



ELEV 10	TDZE 9
---------	--------



REIL Rws 8 and 26  
MIRL Rws 3-21 and 8-26

SE-2, 11 JUL 2024 to 08 AUG 2024

SE-2, 11 JUL 2024 to 08 AUG 2024