

DELRO FIVE ARRIVAL

POTOMAC APP CON
133.0 288.35
D-ATIS
134.85
DULLES TOWER
120.1 317.8 (Rwy 1R/19L)
120.25 348.6 (Rwy 1C/19C)
134.425 348.6 (1L/19R, 12/30)

RAVINE
114.6 RAV : : :
Chan 93

LANCASTER
117.3 LRP : : : :
Chan 120

LIRCH
Turbojets: Expect 14000

DELRO

JOANE

HYPER
Turbojets: Expect 10000
Non-turbojets: Expect 8000

BINNS

(116) 7000 *3600

10000 *3000

MODENA
113.2 MXE : : : :
Chan 79

MARTINSBURG
112.1 MRB : : : :
Chan 58

P-40 R-4009

(50)

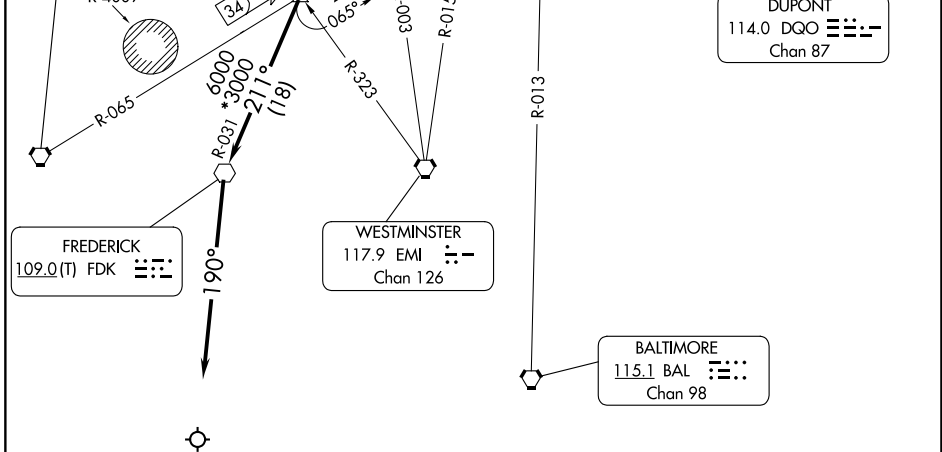
(12) 7000 *3200

10000 *3900

DUPONT
114.0 DQO : : : :
Chan 87

NE-3, 11 JUL 2024 to 08 AUG 2024

NE-3, 11 JUL 2024 to 08 AUG 2024



NOTE: Chart not to scale.

NOTE: RADAR required.
NOTE: For aircraft capable of 180K or greater.

ARRIVAL ROUTE DESCRIPTION

LANCASTER TRANSITION (LRP.DELRO5): From over LRP VOR/DME on LRP R-248 to DELRO. Thence. . . .
MODENA TRANSITION (MXE.DELRO5): From over MXE VORTAC on MXE R-283 to DELRO. Thence. . . .

. . . .From DELRO on LRP R-248 to LIRCH, then on LRP R-248 to BINNS, then on LRP R-248 to HYPER, then on FDK R-031 to FDK VOR, then on heading 190° or as assigned by ATC. Expect RADAR vectors to final approach course.