


LOC I-OSZ 111.3	APP CRS 011°	Rwy ldg 11500
		TDZE 286
		Apt Elev 312

ILS RWY 1C (SA CAT II)

WASHINGTON DULLES INTL (IAD)

RNP APCH-GPS. From GNATZ or HUFFF.

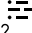
DME or RADAR required. DME required for LOC only.
RADAR required for procedure entry at MUDDO.

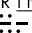
MALSR  MISSED APPROACH: Climb to 4000 on AML VOR/DME R-010 to CHDMN/AML 16.9 DME/RADAR and hold, continue climb-in-hold to 4000.

Simultaneous approach authorized.
DME from AML VOR/DME.
DME use requires simultaneous reception of I-OSZ and AML DME.

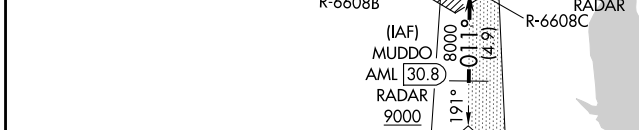
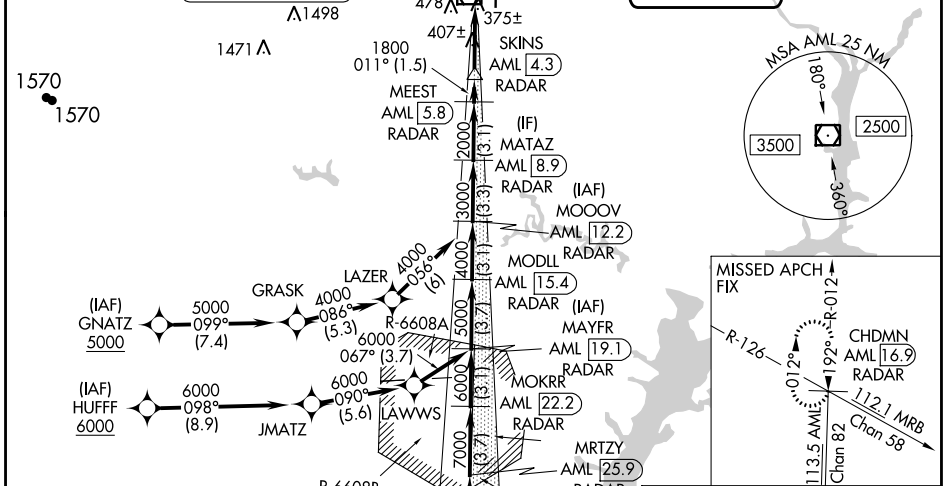
POTOMAC APP CON 120.45 306.925 (241°-330°) 128.525 306.925 (091°-240°) 126.1 338.25 (331°-090°)	DULLES TOWER 120.1 317.8 (Rwys 1R/19L) 120.25 348.6 (Rwys 1C/19C) 134.425 348.6 (Rwys 1L/19R and 12/30)	GND CON 121.9 317.8 (EAST) 121.625 348.6 (WEST)	CLNC DEL 135.7 317.8
---	---	---	--------------------------------

D-ATIS
134.85

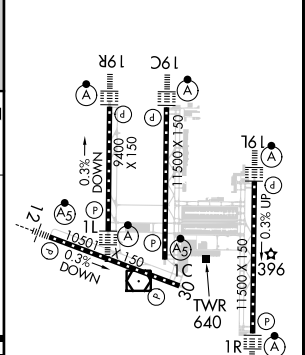
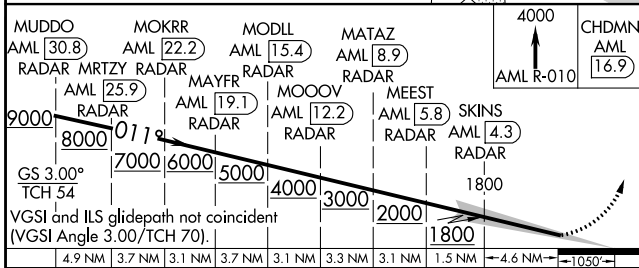
ARMEL
113.5 AML 
Chan 82

LOCALIZER **111.3**
I-OSZ 

CPDLC



ELEV 312	D	TDZE 286
----------	---	----------



CATEGORY	A	B	C	D
S-ILS 1C	RA 104/12 100 DA 386			

SA CATEGORY II ILS - SPECIAL AIRCREW & AIRCRAFT CERTIFICATION REQUIRED

TDZ/CL Rwys 1C, 1L, 1R, 12, 19C and 19R
REIL Rwy 30
HIRL all Rwys

NE-3, 11 JUL 2024 to 08 AUG 2024

NE-3, 11 JUL 2024 to 08 AUG 2024